

Specialized  
in led strip  
customization  
service



# SILICONE NEON STRIP

Product Catalogue

## CERULEAN LIMITED

📍 No.9, Est YuanMei Rd, NanCheng District,  
DongGuan,GuangDong,China. - 523073  
☎ 0769-89077505  
✉ sales@ceruleansign.com  
🌐 www.ceruleansign.com

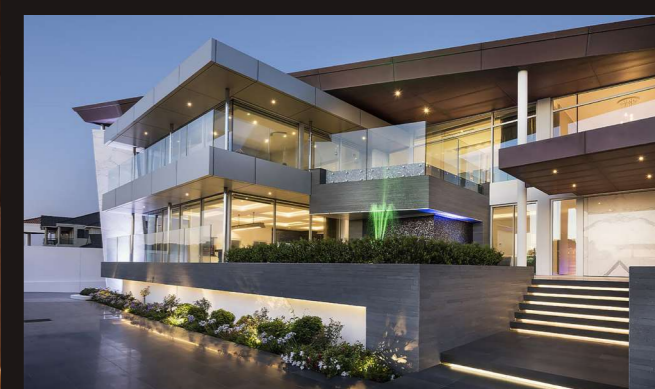
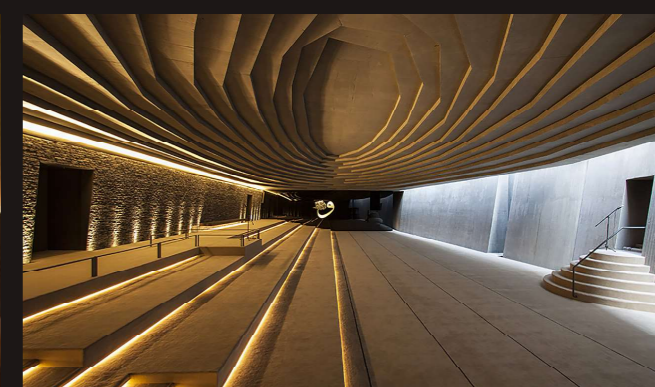
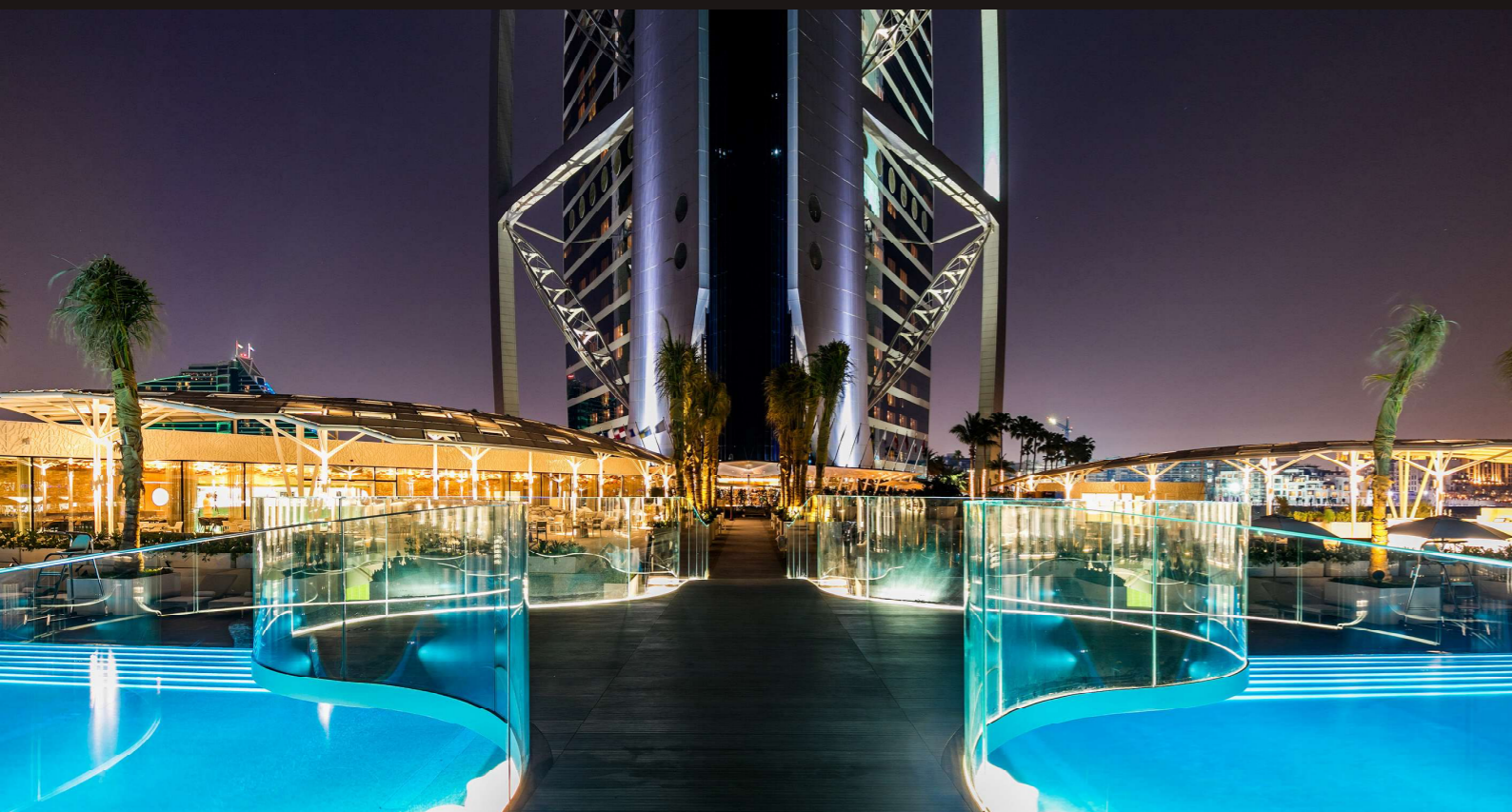
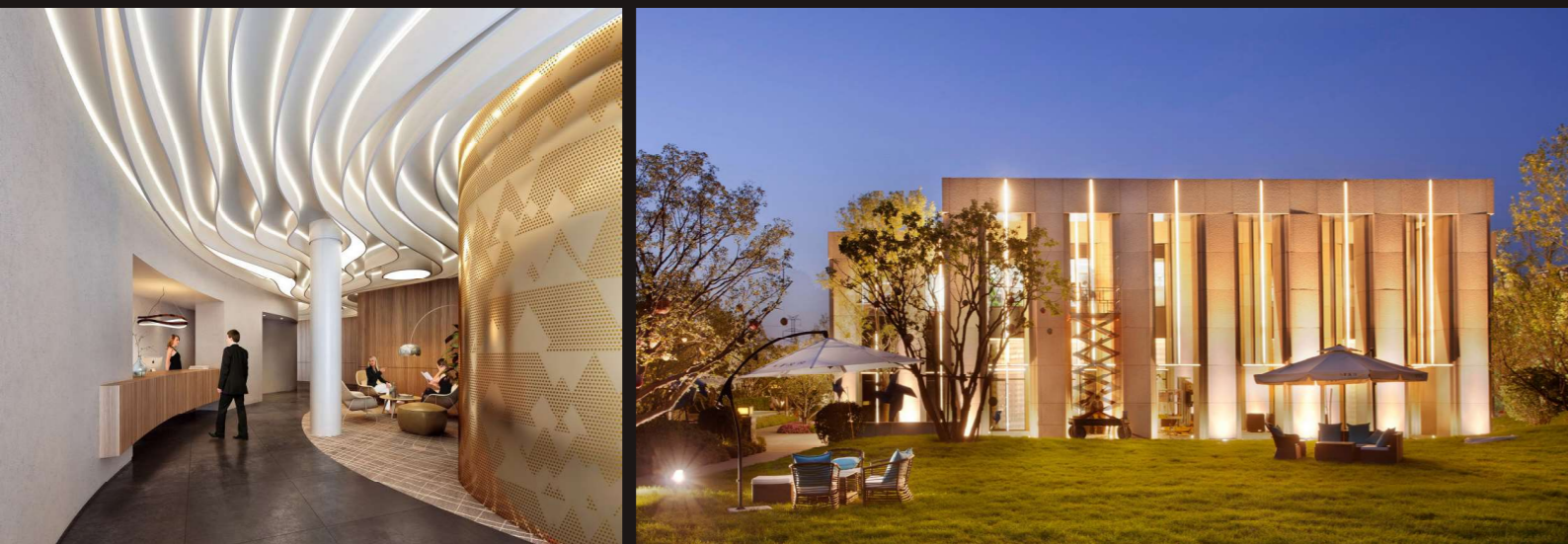
Specialized in led strip customization service



# SILICONE NEON STRIP

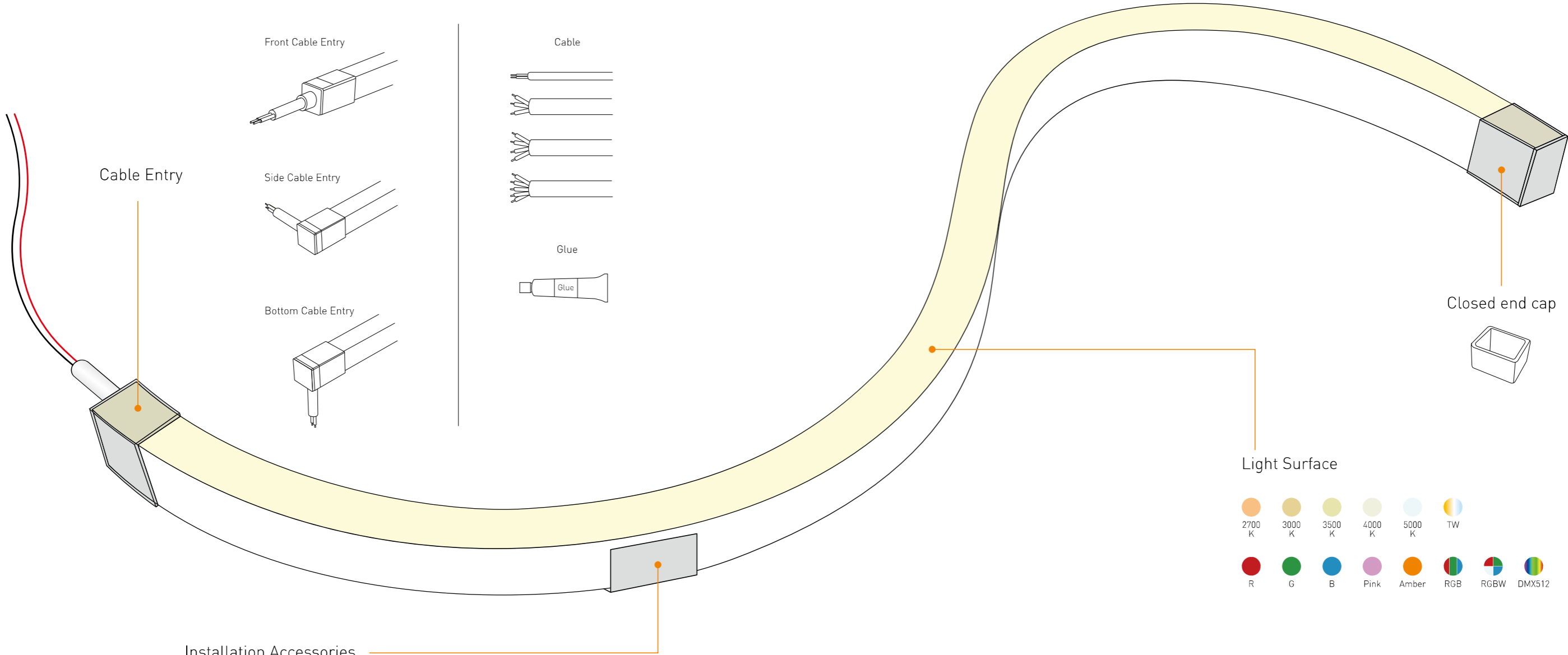
Silicone Neon Strip adopts the high light transmittance and environmental protection grade silicone gel material, with integrated extrusion molding process. And its protection grade can reach up to IP67/IP68. With excellent heat resistance, cold resistance, aging resistance, yellowing resistance, UV resistance, saltwater resistance, the outstanding feature of the material is a wide temperature range(-50 to 200 degrees).

# Application



Applying to indoor and outdoor decoration, building outlines, city night, scenes illuminating and so on, like corridors, roof corners & edges, and other places for decorative lighting.

# Silicone Neon Strip Solution



Installation Accessories

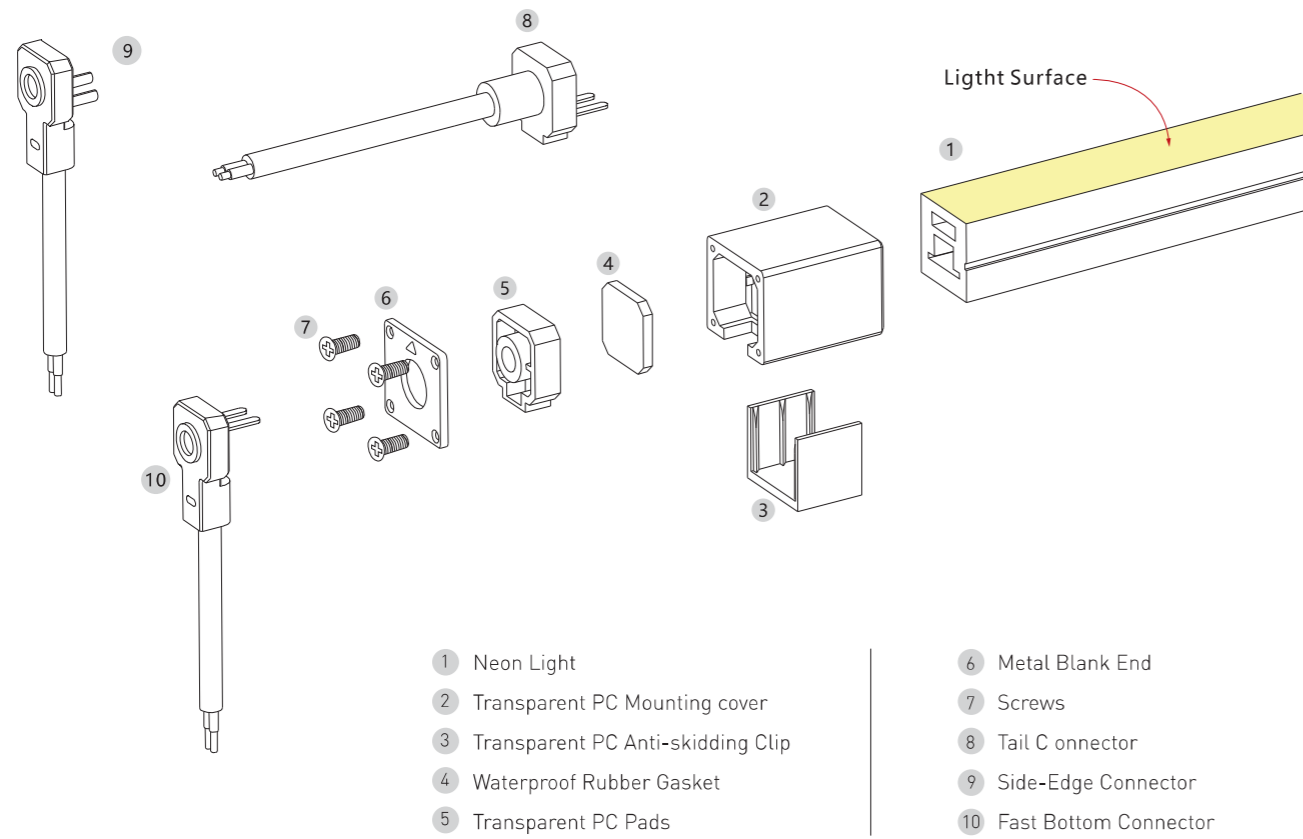


Stainless Steel Mounting clip    Aluminium Mounting clip    Aluminium Profile

# Various Connections

Provide multiple installation accessories for top bend and side bend, meet various applying demands.

## Accessories diagram for Solder Free End Cap



## Solder Free End Cap



Front Cable Entry

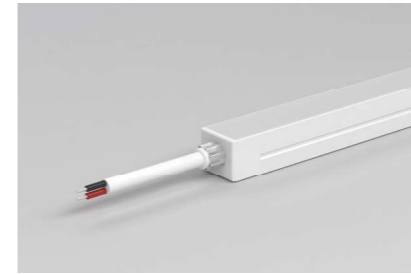


Side Cable Entry

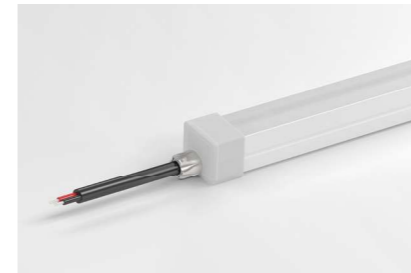


Bottom Cable Entry

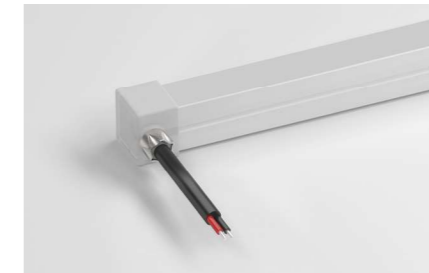
## Integral end cap



## Silicone end cap



Front Cable Entry:  
The cable could be hidden in all directions by the flexible design.



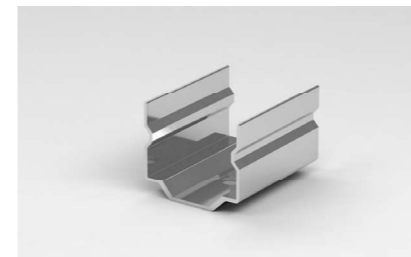
Side Cable Entry:  
The cable could be perfectly hidden to achieve seamless light connection.



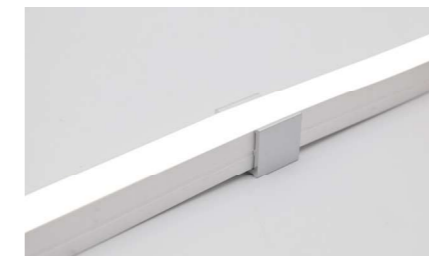
Bottom Cable Entry:  
The cable could be perfectly hidden to achieve seamless light connection.

## Mounting method

### Stainless Steel Mounting clip



### Aluminum Mounting clip



### Aluminium Profile



## IP67, Side Bend Series

CNE-1220 | CNE-1018 | CNE-0612

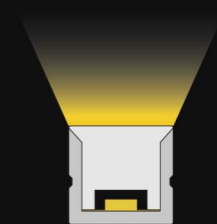
- Unique optical light distribution structure design, uniform lighting surface and no shadow.
- IP67 protection level, salt solution resistance, acids & alkalis, corrosive gases, fire and UV
- Systematized solution of installation.



## IP67, Top Bend Series

CNE-1615 | CNE-1212

- Unique optical light distribution structure design, uniform lighting surface and no shadow.
- IP67 protection level, salt solution resistance, acids & alkalis, corrosive gases, fire and UV
- Systematized solution of installation.

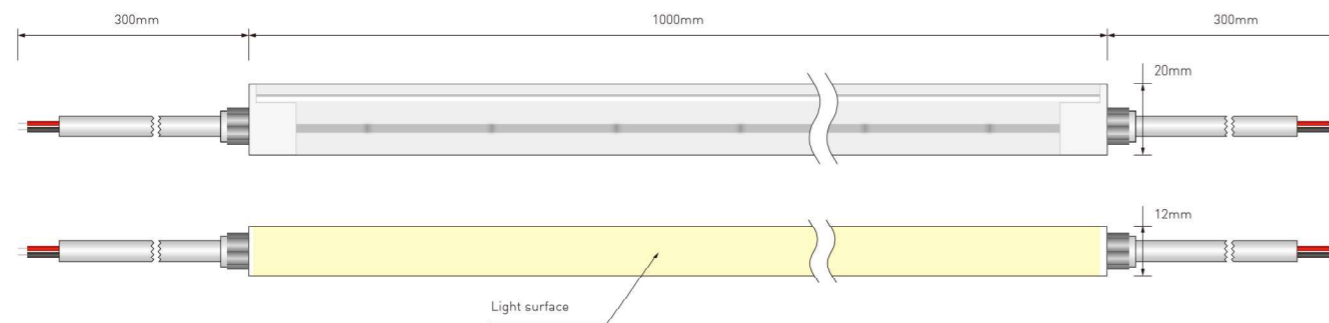


# IP67 NEON STRIP CNE-1220

IP67 FLEX LEDNEON CNE-1220, Side bend, DC24V. Cross section size 12mm x 20mm(W x H), which is horizontal bending with radius of 150mm. It is IP67 protected, UV resistant, solvents resistant and saltwater resistant. Dot free will bring the most excellent performance for indoor & outdoor applications.



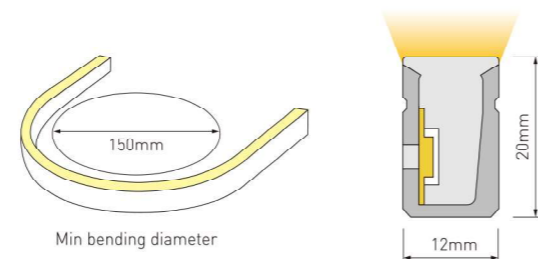
## Dimension



Technical Data	
Working Voltage	DC24V
CRI	>90
Rated Power/m	5w/10w/15w
Storage Temperature	-25 C ~60 C
Ambient Temperature	T <sub>min</sub> =-25 C, T <sub>max</sub> (Table below)

LEDNEON 1220	Low Output	Std Output	High Output
Power(W/m)	5W	10W	15W
Max. Ambient tempt.(T <sub>max</sub> )	55 C	45 C	35 C

- Note:
- When ambient temperature reaches 55 C, the power is suggested to be 5W/M.
  - Max. run length refers to single side feed in serial connection.
  - The given data are typical values due to the tolerances of the production process and the electrical components, values for light output and electrical power can vary up to 10%.
  - The given color temperature is the temperature of finished product.



3 Step MacAdam

UV Protection

Resistant to solvents

**IP67**

Waterproof Grade

**LM80**

LM80 Standard

Resistant Saltwater



## Single color (Lm/m)

Power	CCT	2700±100	3000±100	3500±200	4000±300	5000±300	Max. Run Length	Unit Cut
5W/M		153	156	177	170	170	27M	50mm
10W/M		303	307	345	335	329	17M	50mm
15W/M		432	432	475	470	462	12M	50mm

Power	CCT	R	G	B	Amber	Pink	Max. Run Length	Unit Cut
5W/M		74	198	35	16	75	27M(R/A:35M)	50mm
10W/M		155	373	70	30	148	17M(R/A:18M)	50mm
15W/M		205	473	93	41	199	12M	50mm

Note: -The running length is base on Constant Current 24Vdc LED Strip.  
 -When use the solder free end cap or waterproof connector, the max run length of 5W/M, 10W/M and 15W/M is respectively 24M, 12M and 8M.

## CCT Tunable (Lm/m)

Power	CCT	2700K	6000K	2700K+6000K	Max. Run Length	Unit Cut
5W/M		80	86	167	5M	50mm
10W/M		171	186	354	5M	50mm
15W/M		229	244	476	5M	50mm

## RGB (Lm/m)

Power	CCT	R	G	B	RGB	Max. Run Length	Unit Cut
5W/M		26	75	16	86	5M	62.5mm
10W/M		36	107	22	160	5M	62.5mm
15W/M		50	121	25	200	5M	62.5mm

## RGBW (Lm/m)

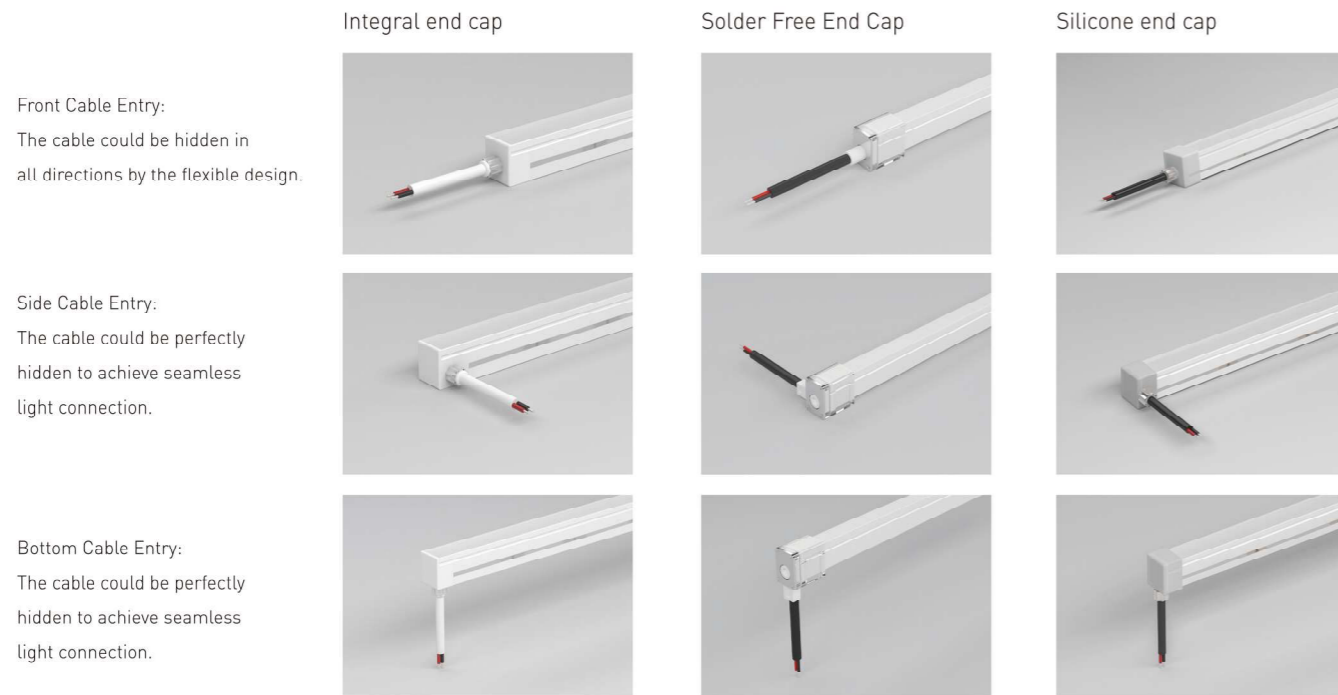
Power	CCT	R	G	B	W(5000k)	RGBW	Max. Run Length	Unit Cut
5W/M		11	44	11	46	110	5M	62.5mm
10W/M		20	86	20	92	211	5M	62.5mm
15W/M		36	98	30	126	301	5M	62.5mm

Power	CCT	R	G	B	W(3500)	RGBW	Max. Run Length	Unit Cut
5W/M		13	43	10	51	109	5M	62.5mm
10W/M		21	83	21	102	219	5M	62.5mm
15W/M		32	102	28	132	305	5M	62.5mm

Power	CCT	R	G	B	W(3000k)	RGBW	Max. Run Length	Unit Cut
5W/M		11	45	12	47	109	5M	62.5mm
10W/M		20	82	20	94	210	5M	62.5mm
15W/M		35	102	28	124	303	5M	62.5mm

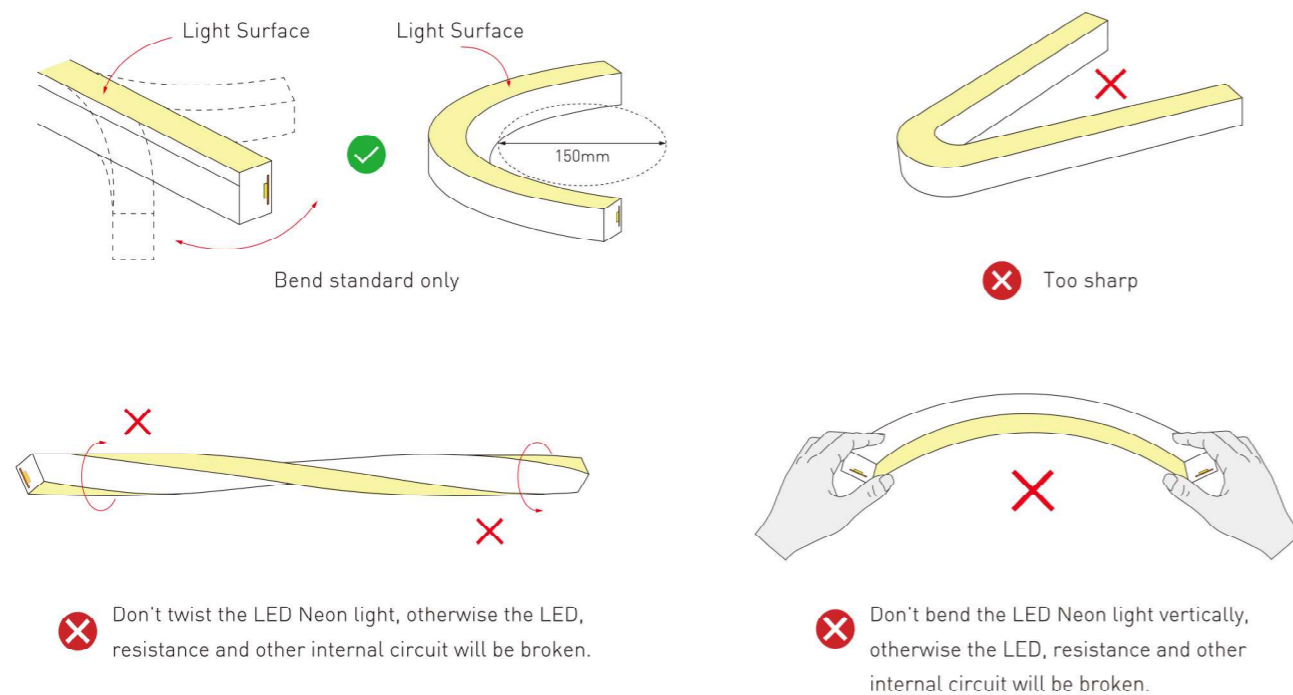
Power	CCT	R	G	B	W(2700k)	RGBW	Max. Run Length	Unit Cut
5W/M		12	42	11	44	105	5M	62.5mm
10W/M		21	79	20	86	197	5M	62.5mm
15W/M		35	95	27	114	278	5M	62.5mm

## Cable Entry

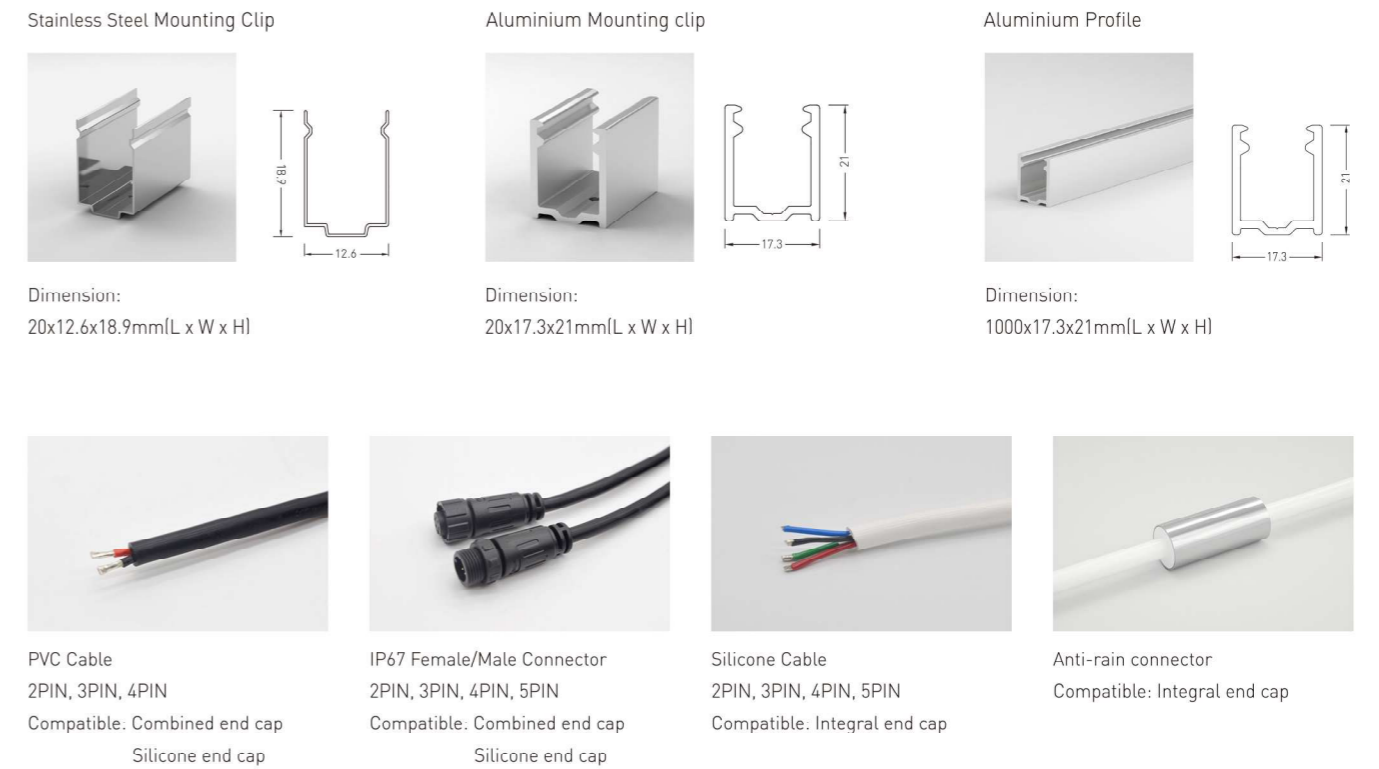


## Operation Guidance

The LED neon strip can be only bend along the light surface, like the following drawing.  
Don't twist the light, and don't bend smaller than the allowed minimum 150mm bending diameter:



## Accessories



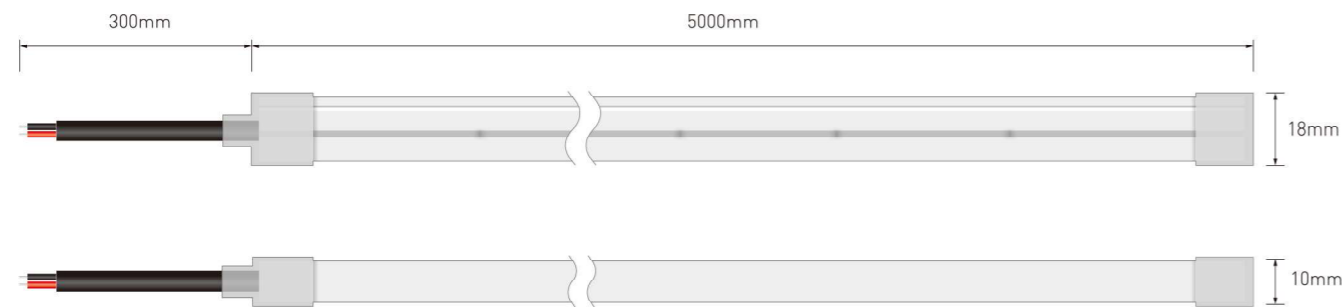


# IP67 NEON STRIP CNE-1018

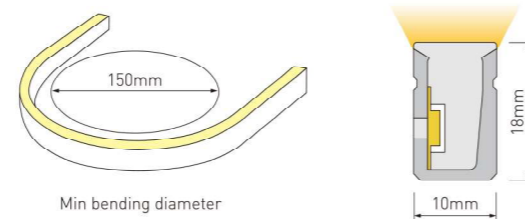
IP67 FLEX LEDNEON 1018, Side bend, DC24V. Cross section size 10mmx 18mm(W x H), which is horizontal bending with diameter of 150mm, which is horizontal bending with radius of 150mm. It is IP67 protected, UV resistant, solvents resistant and saltwater resistant. Dot free will bring the most excellent performance for indoor & outdoor applications.



## Dimension



Technical Data	
Working Voltage	DC24V
CRI	>90
Rated Power/m	5w/10w/15w
Storage Temperature	-25 C ~60 C
Ambient Temperature	T <sub>min</sub> =-25 C, T <sub>max</sub> (Table below)



LEDNEON 1018	Low Output	Std Output	High Output
Power[W/m]	5W	10W	15W
Max. Ambient tempt.[T <sub>max</sub> ]	55 C	45 C	35 C

### Note:

- When ambient temperature reaches 55 C, the power is suggested to be 5W/M.
- Max. run length refers to single side feed in serial connection.
- The given data are typical values due to the tolerances of the production process and the electrical components, values for light output and electrical power can vary up to 10%.
- The given color temperature is the temperature of finished product.



3 Step MacAdam

UV Protection

Resistant to solvents

**IP67**

Waterproof Grade

**LM80**

LM80 Standard

Resistant Saltwater



## Single color (Lm/m)

Power	CCT	2700±100	3000±100	3500±200	4000±300	5000±300	Max. Run Length	Unit Cut
5W/M		160	163	170	178	180	25M	50mm
10W/M		312	328	327	356	346	17M	50mm
15W/M		422	441	452	484	484	12M	50mm

Power	CCT	R	G	B	Amber	Pink	Max. Run Length	Unit Cut
5W/M		68	195	35	17	74	25M (R/A: 33M)	50mm
10W/M		145	369	65	30	148	17M (R/A: 18M)	50mm
15W/M		192	466	93	37	196	12M (R/A: 12M)	50mm

Note: - The running length is base on Constant Current 24Vdc LED Strip.

-When use waterproof connector, the max run length of 5W/M,10W/M and 15W/M is respectively 24M,12M and 8M.

## CCT Tunable (Lm/m)

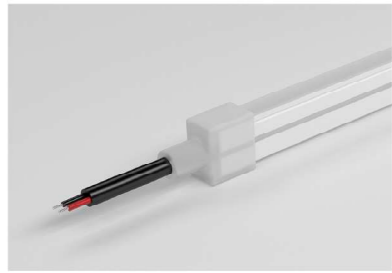
Power	CCT	2700K	6000K	2700K+6000K	Max. Run Length	Unit Cut
5W/M		77	83	160	5M	50mm
10W/M		163	173	337	5M	50mm
15W/M		219	231	451	5M	50mm

## RGB (Lm/m)

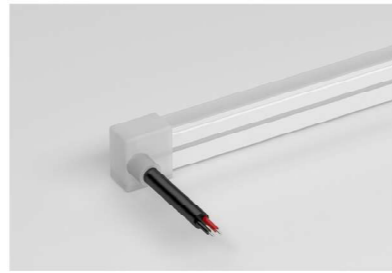
Power	CCT	R	G	B	RGB	Max. Run Length	Unit Cut
5W/M		17	50	9	77	5M	62.5mm
10W/M		36	90	20	152	5M	62.5mm
15W/M		52	108	21	180	5M	62.5mm

## Cable Entry

### Silicone end cap



**Front Cable Entry:**  
The cable could be hidden in all directions by the flexible design.



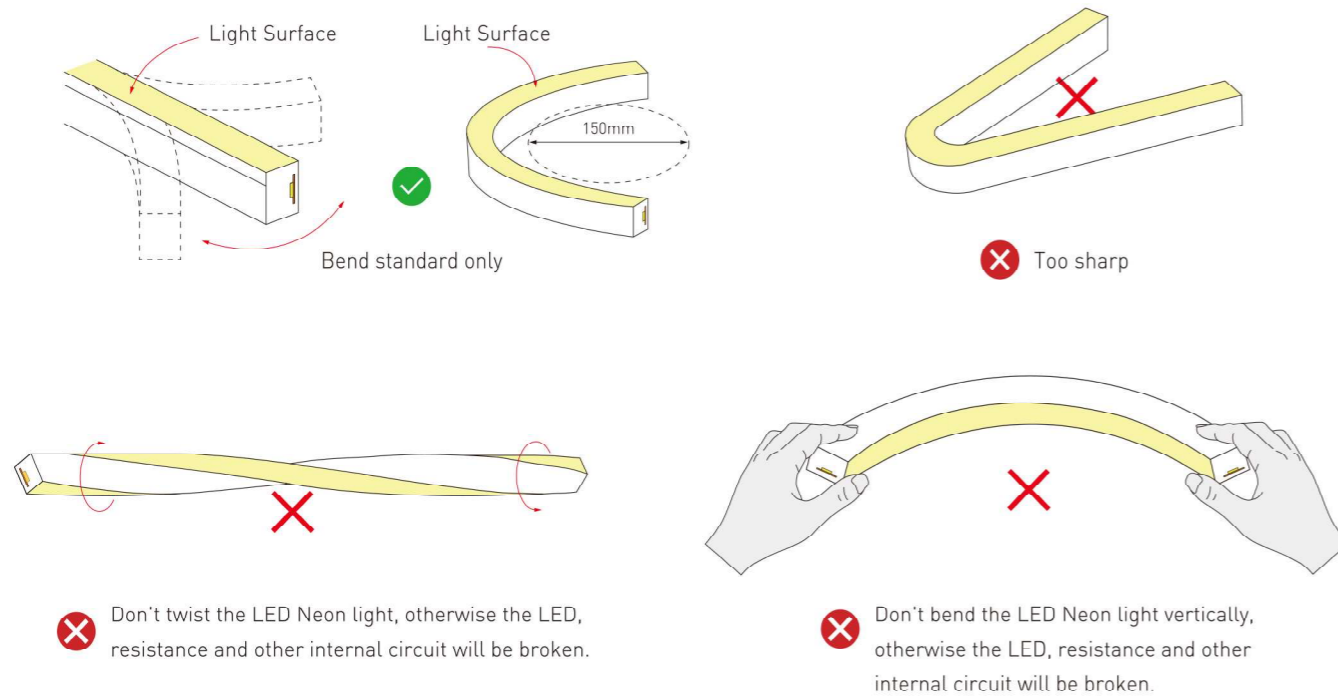
**Side Cable Entry:**  
The cable could be perfectly hidden to achieve seamless light connection.



**Bottom Cable Entry:**  
The cable could be perfectly hidden to achieve seamless light connection.

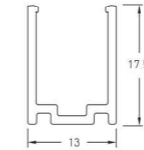
## Operation Guidance

The LED neon strip can be only bend along the light surface, like the following drawing;  
Don't twist the light, and don't bend smaller than the allowed minimum 150mm bending diameter;



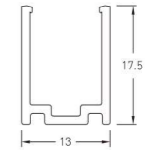
## Accessories

### Aluminium Mounting clips



Dimension:  
20x13x17.5mm(L x W x H)

### Aluminium Profile



Dimension:  
1000x13x17.5mm(L x W x H)



PVC Cable  
2PIN, 3PIN, 4PIN  
Color: Black



IP67 Connector 2PIN, 3PIN, 4PIN  
Wire Gauge: 0.5mm<sup>2</sup>/22AWG  
Color: Black



Silicone Cable  
2PIN, 3PIN, 4PIN  
Color: White



Anti-rain connector



Silicone closed end cap  
Dimension: 13x12.5x20.5mm(LxWxH)  
Color: Semi-Transparent



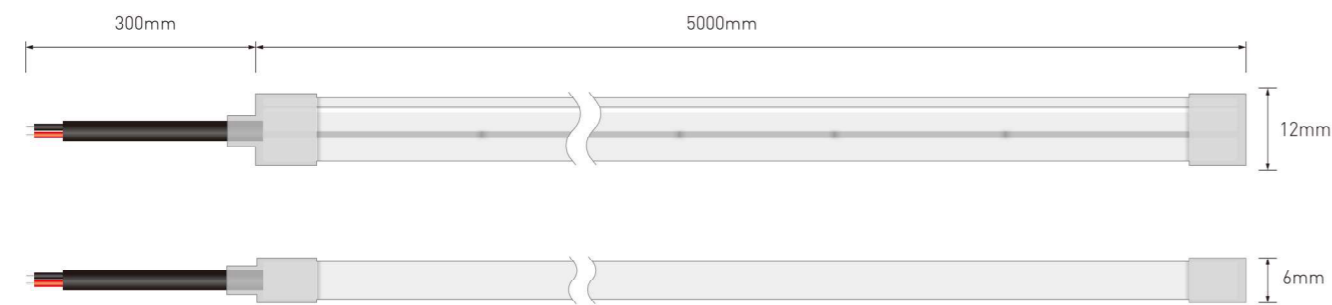
Scissor  
Material: stainless steel

# IP67 NEON STRIP CNE-0612

IP67 FLEX LEDNEON CNE-0612, Side bend, DC24V. Cross section size 6mm x 12mm(W x H), which is horizontal bending with diameter of 50mm. It is IP67 protected, UV resistant, solvents resistant and salt-water resistant. Dot free will bring the most excellent performance for indoor & outdoor applications.



## Dimension

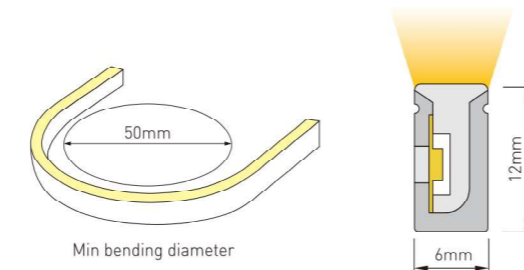


Technical Data	
Working Voltage	DC24V
CRI	>90
Rated Power/m	5w/10w
Storage Temperature	-25°C ~ -60°C
Ambient Temperature	T <sub>min</sub> = -25°C, T <sub>max</sub> [Table below]

LEDNEON 0612	Low Output	Std Output
Power[W/m]	5W	10W
Max. Ambient tempt.[T <sub>max</sub> ]	55°C	45°C

### Note:

- Max. run length refers to single side feed in serial connection.
- The given data are typical values due to the tolerances of the production process and the electrical components, values for light output and electrical power can vary up to 10%.
- The given color temperature is the temperature of finished product.



3-Step MacAdam	UV Protection	Resistant to solvents
IP67 Waterproof Grade	LM80 Standard	Resistant Saltwater



## Single color (Lm/m)

Power	CCT	2700±100	3000±100	3500±200	4000±300	5000±300	Max. Run Length	Unit Cut
5W/M		178	154	169	186	187	15M	50mm
10W/M		353	299	327	360	360	10M	50mm

Power	CCT	R	G	B	Amber	Pink	Max. Run Length	Unit Cut
5W/M		82	240	30	61	78	15M [R/A:20M]	50mm
10W/M		160	398	52	125	144	10M [R/A:13M]	50mm

Note: -The running length is base on Constant Current 24Vdc LED Strip.

-When use waterproof connector, the max run length of 5W/M,10W/M is respectively 20M,12M.

## CCT Tunable (Lm/m)

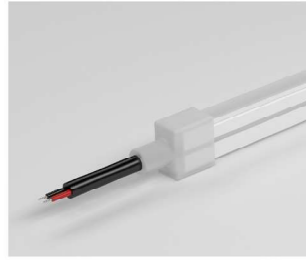
Power	CCT	2700K	6000K	2700K+6000K	Max. Run Length	Unit Cut
5W/M		58	88	158	5M	50mm
10W/M		126	177	269	5M	50mm

## RGB (Lm/m)

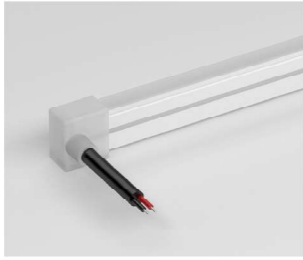
Power	CCT	R	G	B	RGB	Max. Run Length	Unit Cut
5W/M		17	47	6	73	5M	50mm
10W/M		33	80	15	126	5M	50mm

## Cable Entry

### Silicone end cap



Front Cable Entry  
The cable could be hidden in all directions by the flexible design.

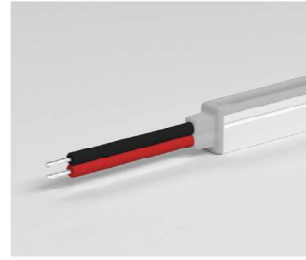


Side Cable Entry  
The cable could be perfectly hidden to achieve seamless



Bottom Cable Entry  
The cable could be perfectly hidden to achieve seamless

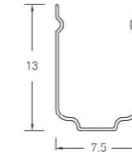
### Integral end cap



Front Cable Entry  
The cable could be hidden in all directions by the flexible design.

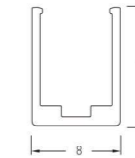
## Accessories

### Stainless Steel Mounting clips



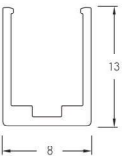
Dimension:  
15x7.5x13mm(L x W x H)

### Aluminium Mounting clips



Dimension:  
20x8x13mm(L x W x H)

### Aluminium Profile



Dimension:  
1000x8x13mm(L x W x H)



PVC Cable  
2PIN, 3PIN, 4PIN  
Color: Black



IP67 Connector 2PIN, 3PIN, 4PIN  
Wire Gauge: 0.5mm<sup>2</sup>/22AWG  
Color: Black



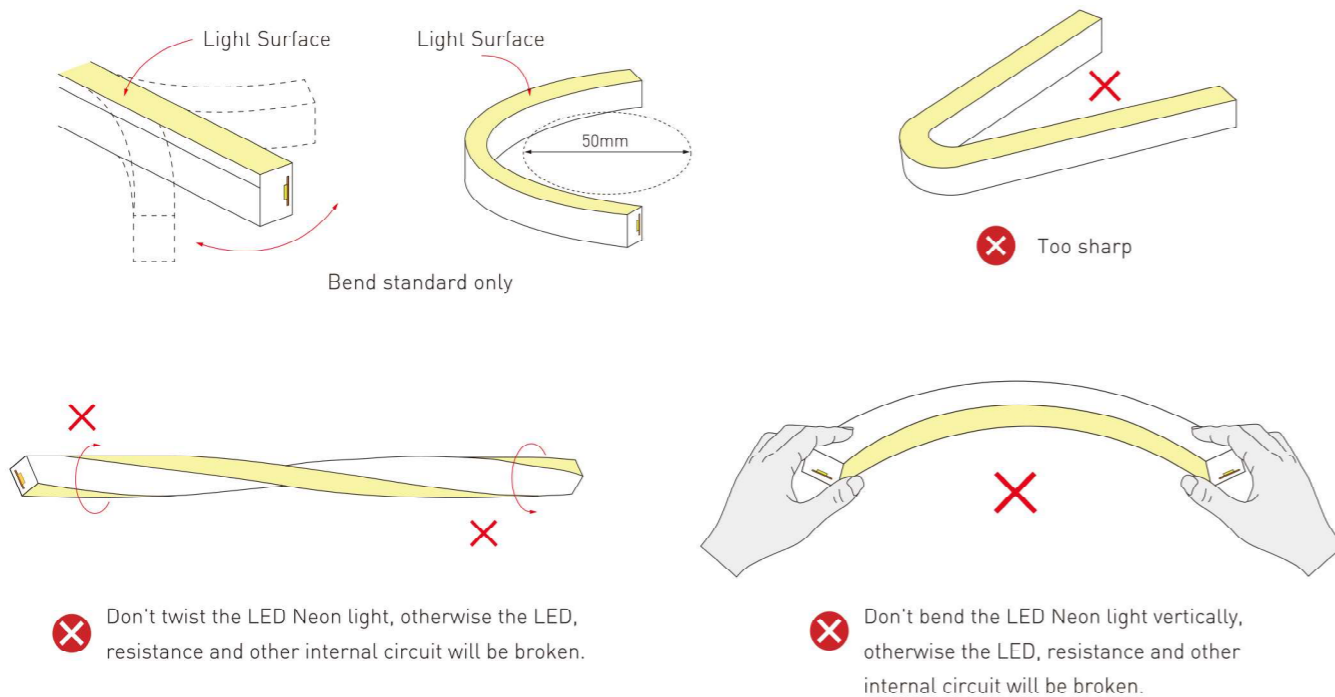
Silicone closed end cap  
Dimension: 13x8.5x14.5mm (LxWxH)  
Color: Semi-Transparent



Scissor  
Material: stainless steel

## Operation Guidance

The LED neon strip can be only bend along the light surface, like the following drawing;  
Don't twist the light, and don't bend smaller than the allowed minimum 50mm bending diameter;

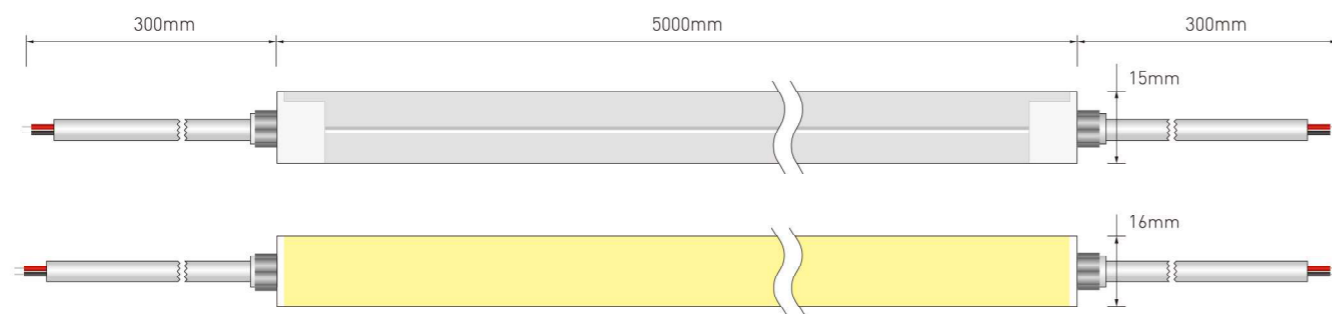


# IP67 NEON STRIP CNE-1615

IP67 FLEX LEDNEON CNE-1615, Top bend, DC24V. Cross section size 16mm x 15mm(W x H), which is vertical bending with diameter of 150mm. It is IP67 protected, UV resistant, solvents resistant and salt-water resistant. Dot free will bring the most excellent performance for indoor & outdoor applications.

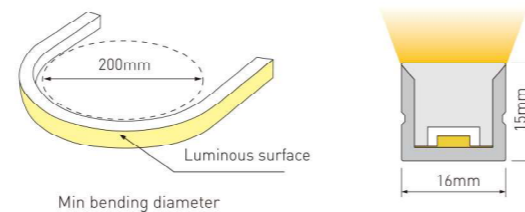


## Dimension



Technical Data	
Working Voltage	DC24V
CRI	>90
Rated Power/m	5w/10w/15w
Storage Temperature	-25 C ~60 C
Ambient Temperature	T <sub>min</sub> =-25 C, T <sub>max</sub> (Table below)

LEDNEON 1615	Low Output	Std Output	High Output
Power[W/m]	5W	10W	15W
Max. Ambient tempt.[T <sub>max</sub> ]	55 C	45 C	35 C



### Note:

- When ambient temperature reaches 55°C, the power is suggested to be 5W/M.
- Max. run length refers to single side feed in serial connection.
- The given data are typical values due to the tolerances of the production process and the electrical components, values for light output and electrical power can vary up to 10%.
- The given color temperature is the temperature of finished product.



3-Step MacAdam

UV Protection

Resistant to solvents

**IP67**

Waterproof Grade

**LM80**

LM80 Standard

Resistant Saltwater



## Single color (Lm/m)

Power	CCT	2700±100	3000±100	3500±200	4000±300	5000±300	Max. Run Length	Unit Cut
5W/M		286	286	301	294	298	27M	50mm
10W/M		553	539	584	573	570	17M	50mm
15W/M		771	767	816	807	794	12M	50mm

Power	CCT	R	G	B	Amber	Pink	Max. Run Length	Unit Cut
5W/M		112	308	57	26	117	27M(R/A:35M)	50mm
10W/M		237	548	107	45	224	17M(R/A:18M)	50mm
15W/M		323	697	149	61	302	12M	50mm

Note: - The running length is base on Constant Current 24Vdc LED Strip.

-When use the solder free end cap or waterproof connector, the max run length of 5W/M, 10W/M and 15W/M is respectively 24M, 12M and 8M.

## CCT Tunable (Lm/m)

Power	CCT	2700K	6000K	2700K + 6000K	Max. Run Length	Unit Cut
5W/M		133	144	279	5M	50mm
10W/M		274	295	569	5M	50mm
15W/M		364	387	766	5M	50mm

## RGB (Lm/m)

Power	CCT	R	G	B	RGB	Max. Run Length	Unit Cut
5W/M		29	97	18	148	5M	62.5mm
10W/M		56	180	34	268	5M	62.5mm
15W/M		79	201	40	323	5M	62.5mm

## RGBW (Lm/m)

Power	CCT	R	G	B	W(5000k)	RGBW	Max. Run Length	Unit Cut
5W/M		18	75	18	74	189	5M	62.5mm
10W/M		32	143	34	158	366	5M	62.5mm
15W/M		53	166	45	209	496	5M	62.5mm

Power	CCT	R	G	B	W(3500)	RGBW	Max. Run Length	Unit Cut
5W/M		19	76	19	79	193	5M	62.5mm
10W/M		33	140	35	169	374	5M	62.5mm
15W/M		55	171	44	223	504	5M	62.5mm

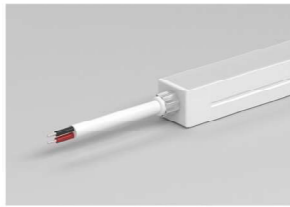
Power	CCT	R	G	B	W(3000k)	RGBW	Max. Run Length	Unit Cut
5W/M		18	77	19	72	188	5M	62.5mm
10W/M		34	138	35	158	358	5M	62.5mm
15W/M		59	171	48	207	500	5M	62.5mm

Power	CCT	R	G	B	W(2700k)	RGBW	Max. Run Length	Unit Cut
5W/M		18	77	18	69	182	5M	62.5mm
10W/M		32	135	31	145	337	5M	62.5mm
15W/M		55	156	42	191	465	5M	62.5mm

## Cable Entry

**Front Cable Entry:**  
The cable could be hidden in all directions by the flexible design.

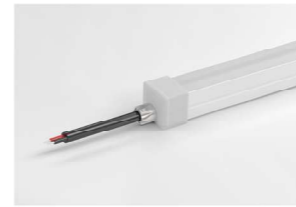
Integral End Cap



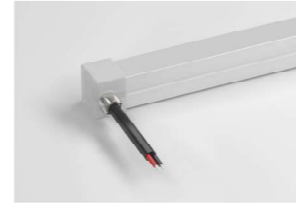
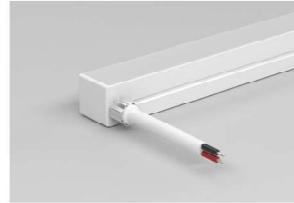
Solder Free End Cap



Silicone end cap



**Side Cable Entry:**  
The cable could be perfectly hidden to achieve seamless light connection.

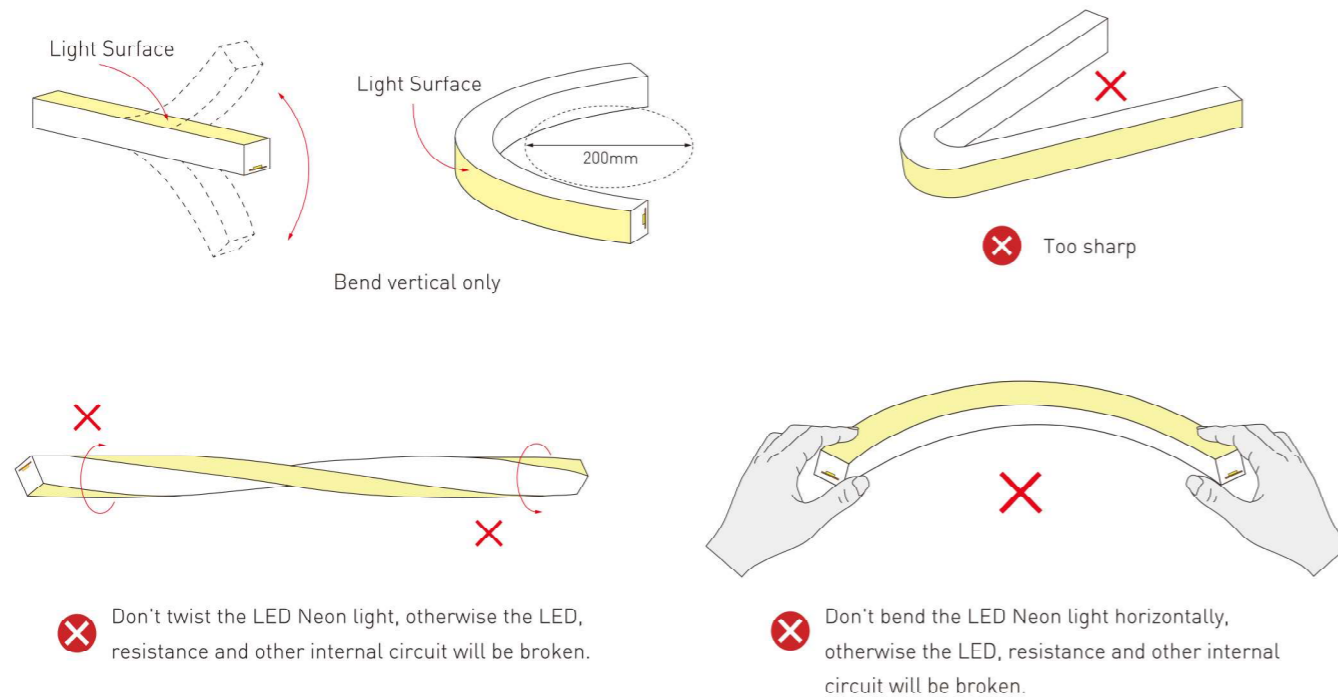


**Bottom Cable Entry:**  
The cable could be perfectly hidden to achieve seamless light connection.



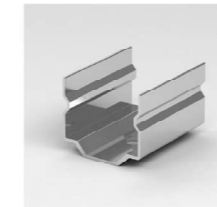
## Operation Guidance

The LED neon strip can be only bend along the light surface, like the following drawing.  
Don't twist the light, and don't bend smaller than the allowed minimum 150mm bending diameter;

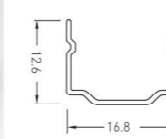


## Accessories

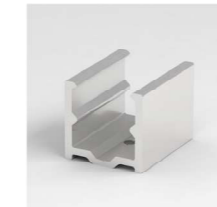
Mounting Clips



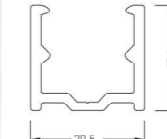
Dimension:  
20x12.6x16.8mm



Aluminium Mounting clips



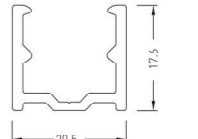
Dimension:  
20x20.5x17.6



Aluminium Profile



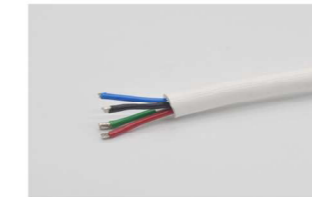
Dimension:  
1000x20.5x17.6



PVC Cable  
2PIN, 3PIN, 4PIN, 5PIN  
Color: Black



IP67 Connector  
2PIN, 3PIN, 4PIN, 5PIN  
Wire Gauge: 0.5mm<sup>2</sup>/22AWG  
Color: Black



Silicone Cable  
2PIN, 3PIN, 4PIN, 5PIN  
Color: White



Anti-rain connector



Silicone closed end cap  
Dimension: 13x18.5x17.5mm  
Color: Semi-Transparent



PC closed end cap  
Dimension: 27.9x20.4x19.4mm  
Material: stainless steel  
Color: Transparent



Scissor  
Material: stainless steel

# IP67 NEON STRIP CNE-1212

IP67 FLEX LEDNEON CNE-1212, Top Bend, DC24V. Cross section size 12mm x 12mm(W x H), which is vertical bending with diameter of 150mm. It is IP67 protected, UV resistant, solvents resistant and saltwater resistant. Dot free will bring the most excellent performance for indoor & outdoor applications.



## Single color (Lm/m)

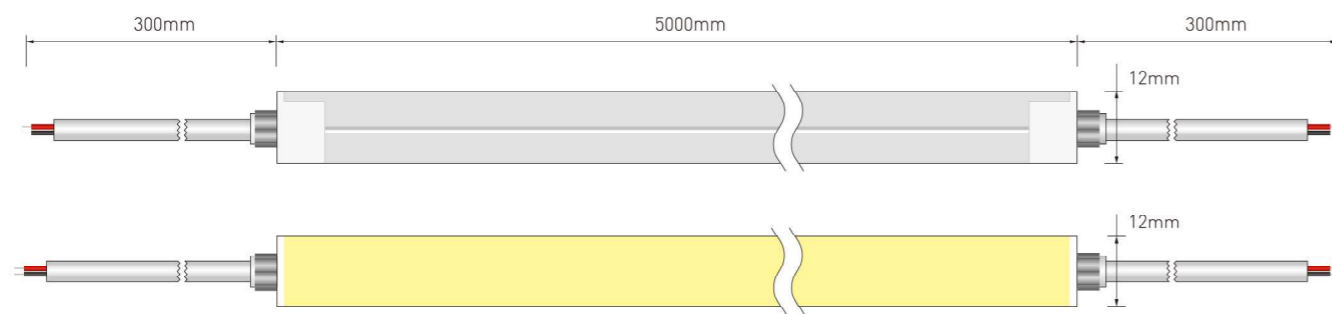
Power	CCT	2700±100	3000±100	3500±200	4000±300	5000±300	Max. Run Length	Unit Cut
5W/M		349	329	355	347	347	19M	50mm
10W/M		668	639	662	677	682	13M	50mm

Power	CCT	R	G	B	Amber	Pink	Max. Run Length	Unit Cut
5W/M		132	374	70	28	143	19M (R/A:25M)	50mm
10W/M		277	703	129	51	278	13M(R/A:17M)	50mm

Note: -The running length is base on Constant Current 24Vdc LED Strip.

-When use the solder free end cap or waterproof connector, the max run length of 5W/M,10W/M is respectively 24M,12M.

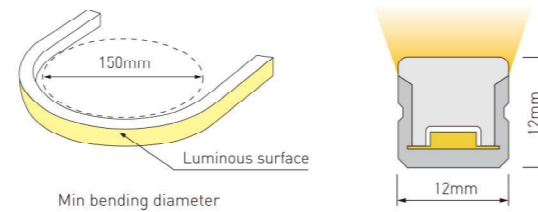
## Dimension



## CCT Tunable (Lm/m)

Power	CCT	2700K	6000K	2700K + 6000K	Max. Run Length	Unit Cut
5W/M		151	161	316	5M	50mm
10W/M		315	336	646	5M	50mm

Technical Data	
Working Voltage	DC24V
CRI	>90
Rated Power/m	5w/10w
Storage Temperature	-25 C ~60 C
Ambient Temperature	T <sub>min</sub> =-25 C, T <sub>max</sub> (Table below)



LEDNEON 1212	Low Output	STD output
Power[W/m]	5W	10W
Max. Ambient tempt.[T <sub>max</sub> ]	55 C	45 C

## RGB (Lm/m)

Power	CCT	R	G	B	RGB	Max. Run Length	Unit Cut
5W/M		34	111	20	174	5M	50mm
10W/M		69	214	40	288	5M	50mm



## Note:

- When ambient temperature reaches 55°C, the power is suggested to be 5W/M.
- Max. run length refers to single side feed in serial connection.
- The given data are typical values due to the tolerances of the production process and the electrical components, values for light output and electrical power can vary up to 10%.
- The given color temperature is the temperature of finished product.

3-Step MacAdam

UV Protection

Resistant to solvents

**IP67**

Waterproof Grade

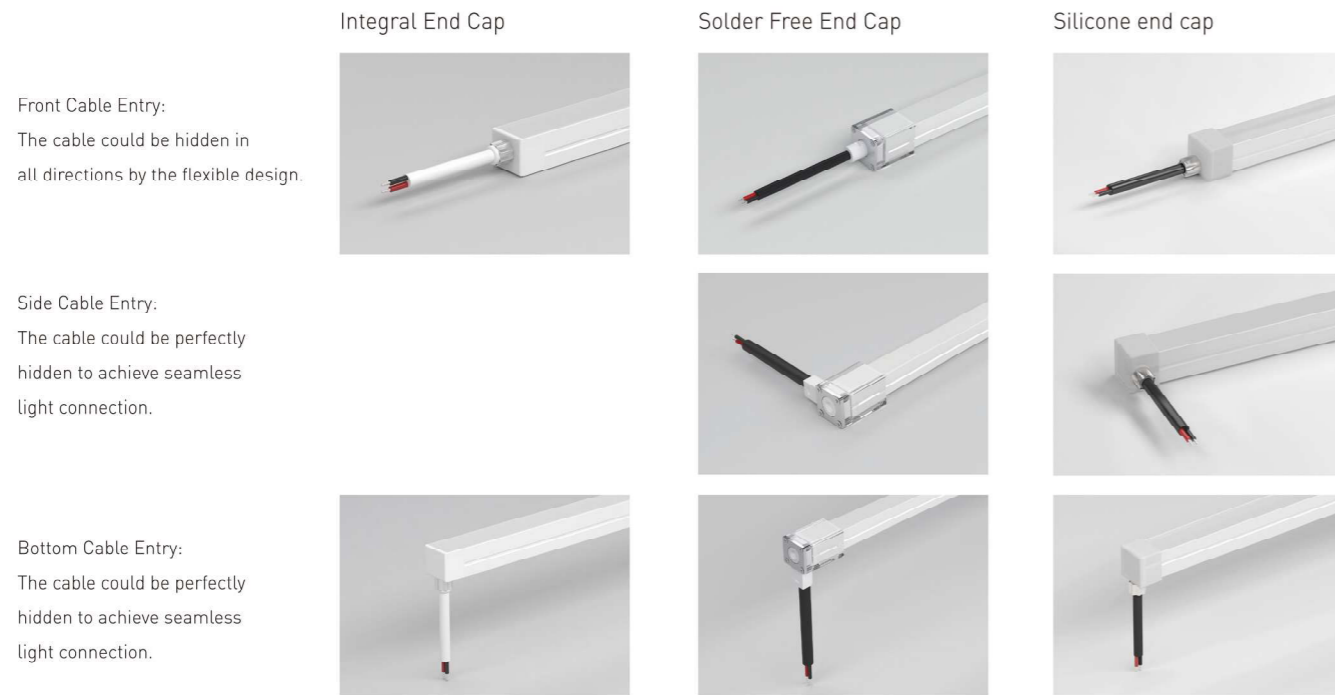
**LM80**

LM80 Standard

Resistant Saltwater

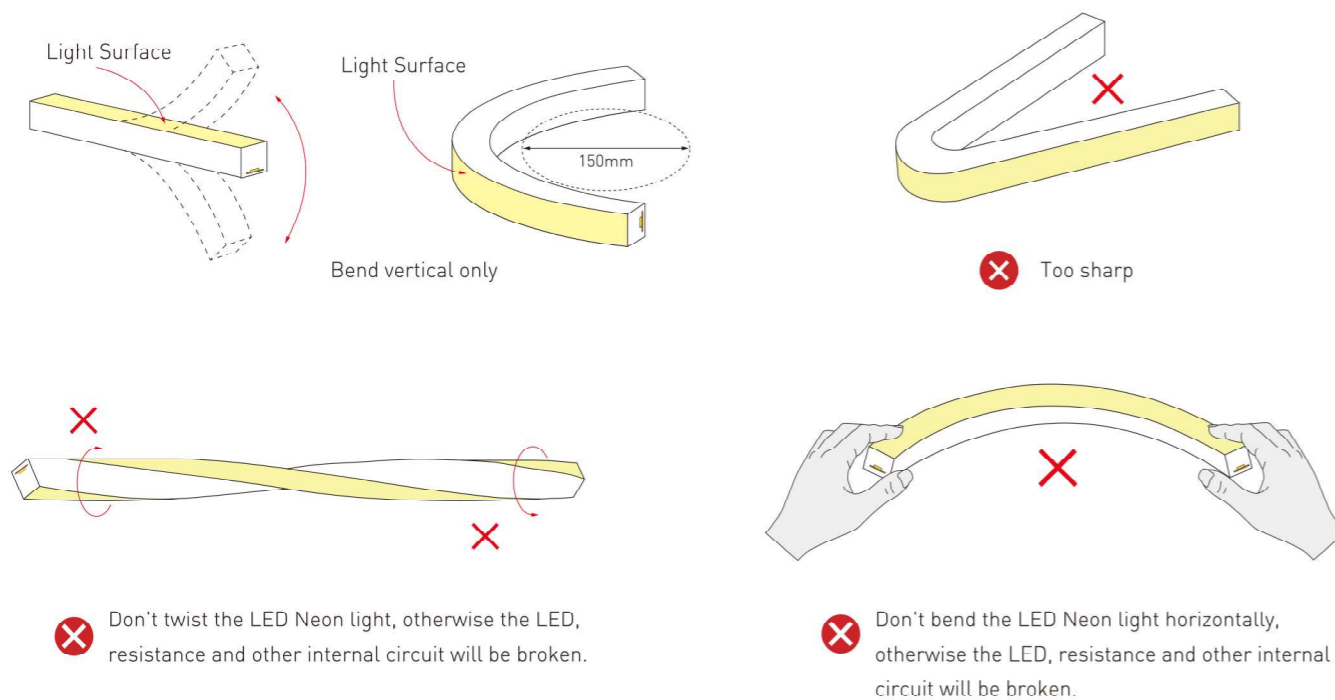


## Cable Entry

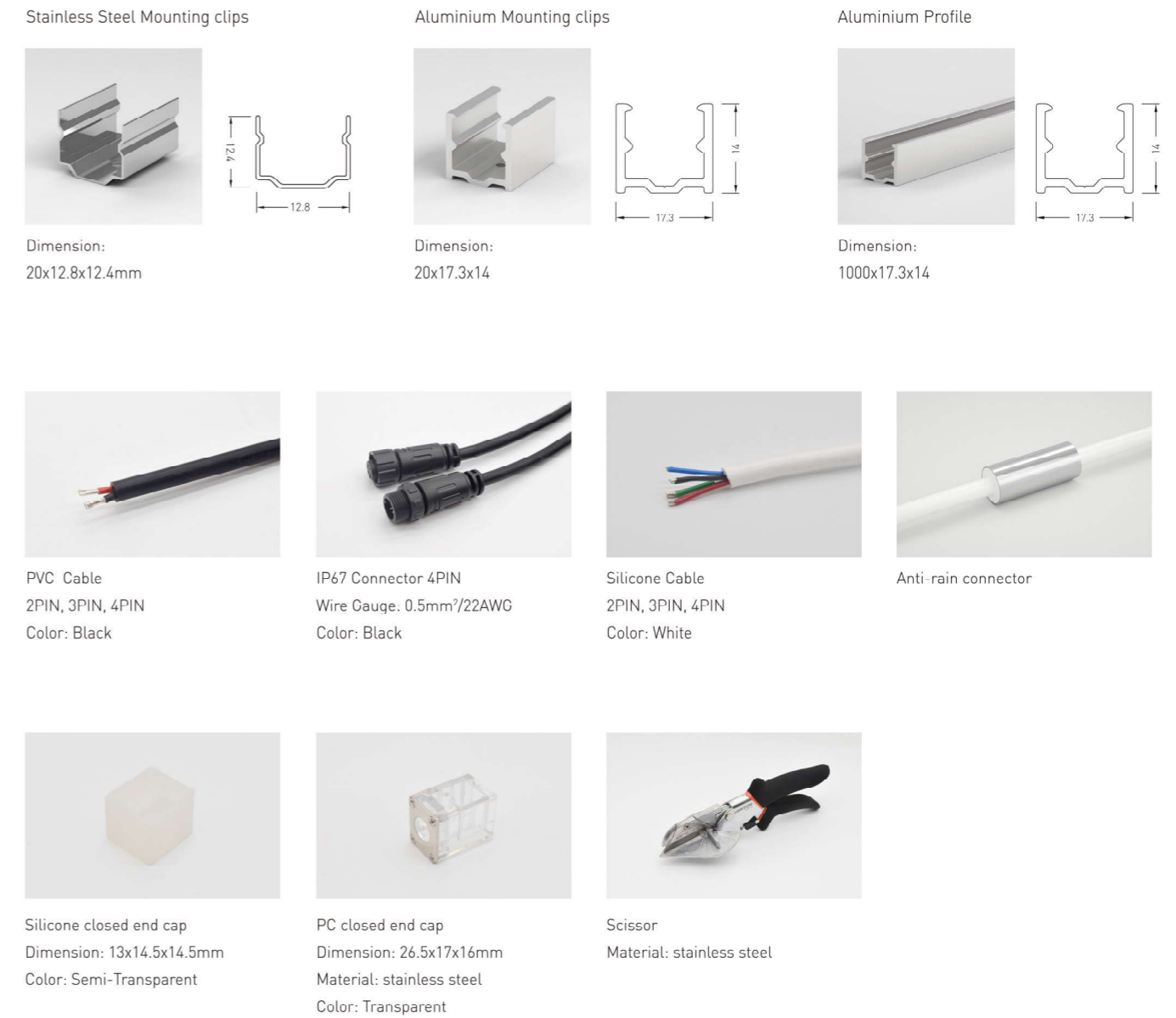


## Operation Guidance

The LED neon strip can be only bend along the light surface, like the following drawing.  
Don't twist the light, and don't bend smaller than the allowed minimum 150mm bending diameter;



## Accessories

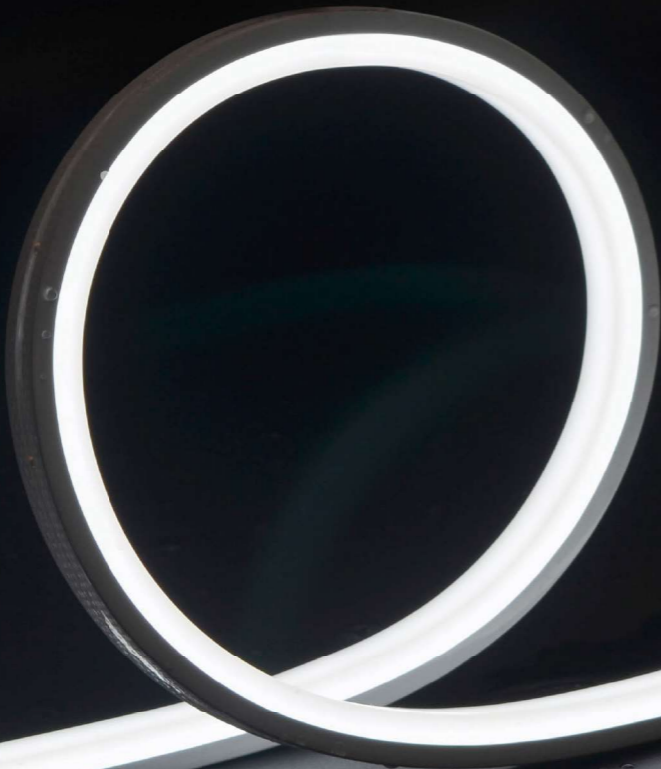
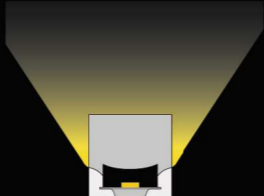




# IP67, Three Sided Luminous (Top Bend)

CNE-1010

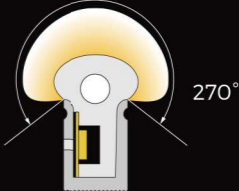
- IP67 protection level, Three Sided luminous surface
- Unique optical light distribution structure design, uniform lighting surface and no shadow.



# IP67, 270° Cambered Luminous Series (Side Bend)

CNE-0817 | CNE-1023 | CNE-1225

- 270° cambered structure design, large luminous surface and homogeneous light
- IP67 protection level, salt solution resistance, acids & alkalis, corrosive gases, fire and UV
- Systematized solution of installation



# IP67 THREE SIDED FLEX LED NEON CNE-1010

"IP67 Three sided FLEX LEDNEON CNE-1010, Top Bend, DC24V. Cross section size 10mm x 10mm(W x H), which is vertical bending with diameter of 100mm. It is IP67 protected, UV resistant, solvents resistant and saltwater resistant.

Dot free will bring the most excellent performance for indoor & outdoor applications."

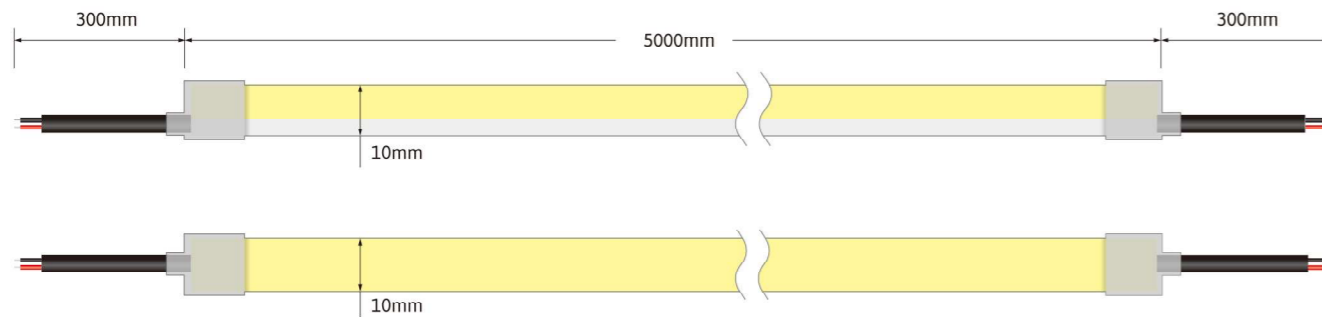


## Single color (Lm/m)

Power	CCT	2700±100	3000±100	3500±200	4000±300	5000±300	Max Run Length	Unit Cut
5W/M		380	402	371	429	427	5M	35.7mm
10W/M		738	786	718	829	827	5M	35.7mm

Power	CCT	R	G	B	Amber	Pink	Max Run Length	Unit Cut
5W/M		154	513	93.9	127	179	5M	35.7mm
10W/M		331	921	174	268	348	5M	35.7mm

## Dimension



wellworth

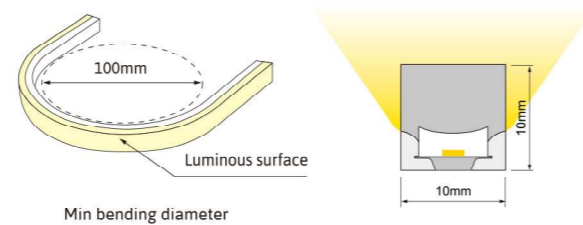
### Technical Data

Working Voltage	DC24V
CRI	>90
Rated Power/m	5w/10w
Storage Temperature	-25 C -60 C
Ambient Temperature	T <sub>min</sub> =-25 C, T <sub>max</sub> (Table below)

LEDNEON 1010	Low Output	Std Output
Power(W/m)	5W	10W
Max. Ambient tempt.(T <sub>max</sub> )	55 C	45 C

### Note:

- Max. run length refers to single side feed in serial connection.
- The given data are typical values due to the tolerances of the production process and the electrical components, values for light output and electrical power can vary up to 10%.
- The given color temperature is the temperature of finished product.

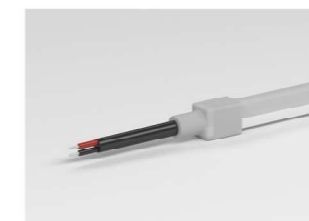


Min bending diameter

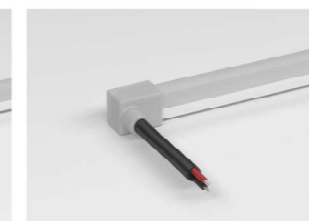
 3 Step MacAdam	 UV Protection	 Resistant to solvents
<b>IP67</b> Waterproof Grade	<b>LM80</b> LM80 Standard	 Resistant Saltwater

## Cable Entry

### Silicone end cap



Front Cable Entry

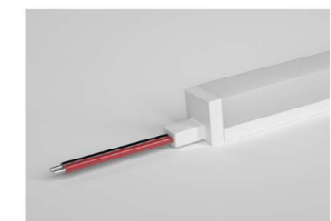


Side Cable Entry



Bottom Cable Entry

### Integral End Cap

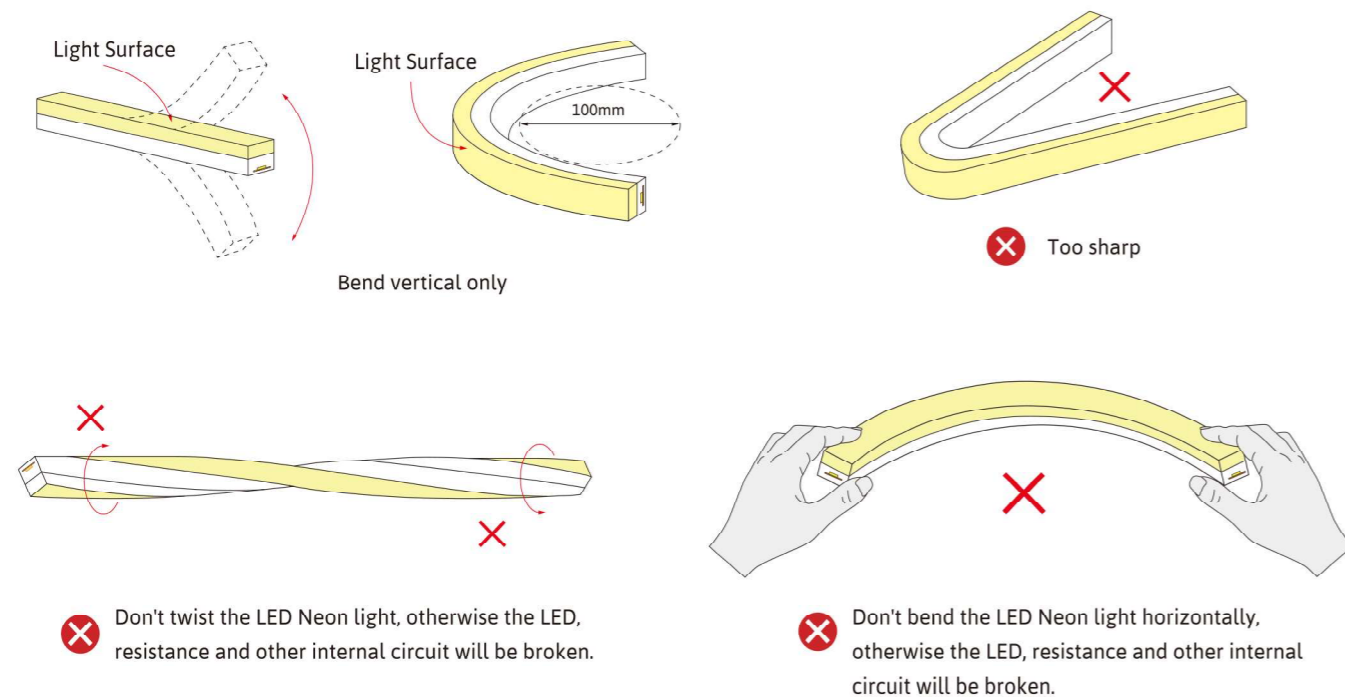


Front Cable Entry



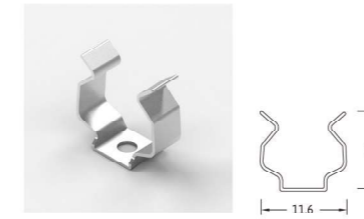
## Operation Guidance

The LED neon Flex can be only bend along the light surface, like the following drawing;  
Don't twist the light, and don't bend smaller than the allowed minimum 100mm bending diameter;



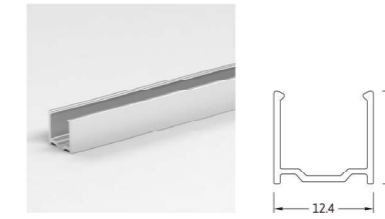
## Accessories

Stainless Steel Mounting clip



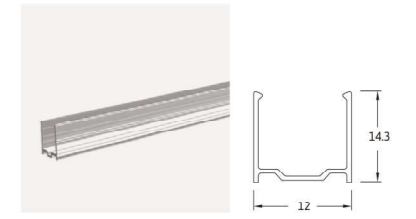
Dimension:  
12x11.6x7.6mm(L x W x H)

Aluminium Profile



Dimension:  
1000x12.4x13mm(L x W x H)

transparent plastic groove



Dimension:  
1000x12x14.3mm(L x W x H)



PVC Cable  
2PIN  
Color: Black



Silicone closed end cap  
Dimension: 12x12mm (WxH)  
Color: Semi-Transparent



Scissor  
Material: stainless steel

# IP67 FLEX LEDNEON CNE-0817

"IP67 FLEX LEDNEON CNE-0817, Side Bend, DC24V. Cross section size 8mm x 17mm(W x H), which is horizontal bending with diameter of 100mm. It is IP67 protected, UV resistant, solvents resistant and saltwater resistant.

Dot free will bring the most excellent performance for indoor & outdoor applications."



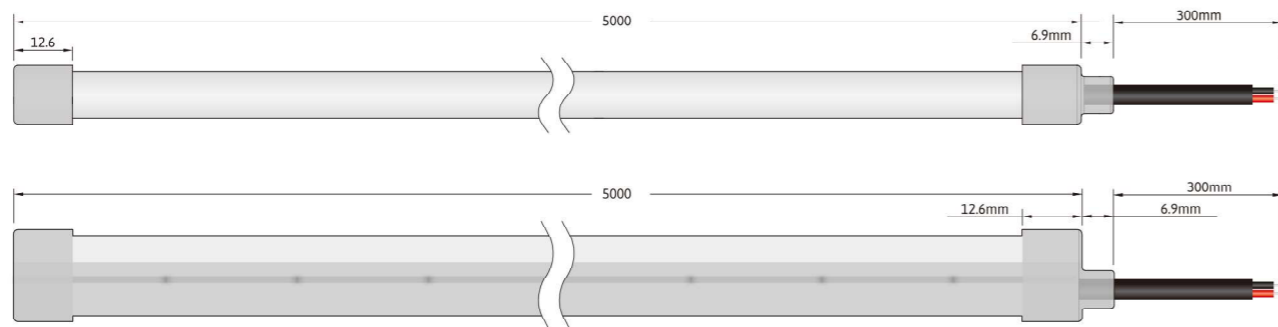
## Single color (Lm/m)

Power	CCT	2700±100	3000±100	3500±200	4000±300	5000±300	Max. Run Length	Unit Cut
5W/M		159	160	167	174	175	19M	50mm
10W/M		310	311	323	340	344	13M	50mm

Power	CCT	R	G	B	Amber	Pink	Max. Run Length	Unit Cut
5W/M		70	190	38	59	74	19M (R/A: 25M)	50mm
10W/M		150	356	71	116	148	13M (R/A: 17M)	50mm

Note: -The running length is base on Constant Current 24Vdc LED Strip.  
-When use waterproof connector, the max run length of 5W/M,10W/M is respectively 24M,12M.

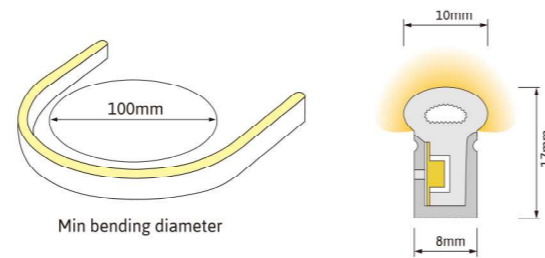
## Dimension



## CCT Tunable (Lm/m)

Power	CCT	2700K	6000K	2700K+6000K	Max. Run Length	Unit Cut
5W/M		81	83	161	5M	50mm
10W/M		169	173	332	5M	50mm

Technical Data	
Working Voltage	DC24V
CRI	>90
Rated Power/m	5w/10w
Storage Temperature	-25 C ~60 C
Ambient Temperature	T <sub>min</sub> = -25 C, T <sub>max</sub> (Table below)



LEDNEON 0817	Low Output	Std Output
Power(W/m)	5W	10W
Max. Ambient tempt.(T <sub>max</sub> )	55 C	45 C

## Note:

- Max. run length refers to single side feed in serial connection.
- The given data are typical values due to the tolerances of the production process and the electrical components, values for light output and electrical power can vary up to 10%.
- The given color temperature is the temperature of finished product.

3 Step MacAdam

UV Protection

Resistant to solvents

**IP67**

Waterproof Grade

**LM80**

LM80 Standard

Resistant Saltwater



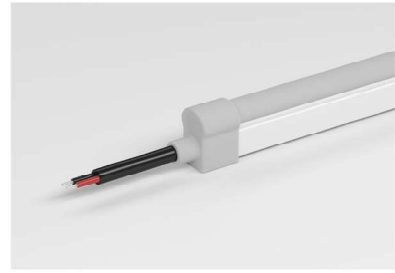
## RGB (Lm/m)

Power	CCT	R	G	B	RGB	Max. Run Length	Unit Cut
5W/M		17	56	11	82	5M	62.5mm
10W/M		36	94	17	144	5M	62.5mm



## Cable Entry

### Silicone end cap

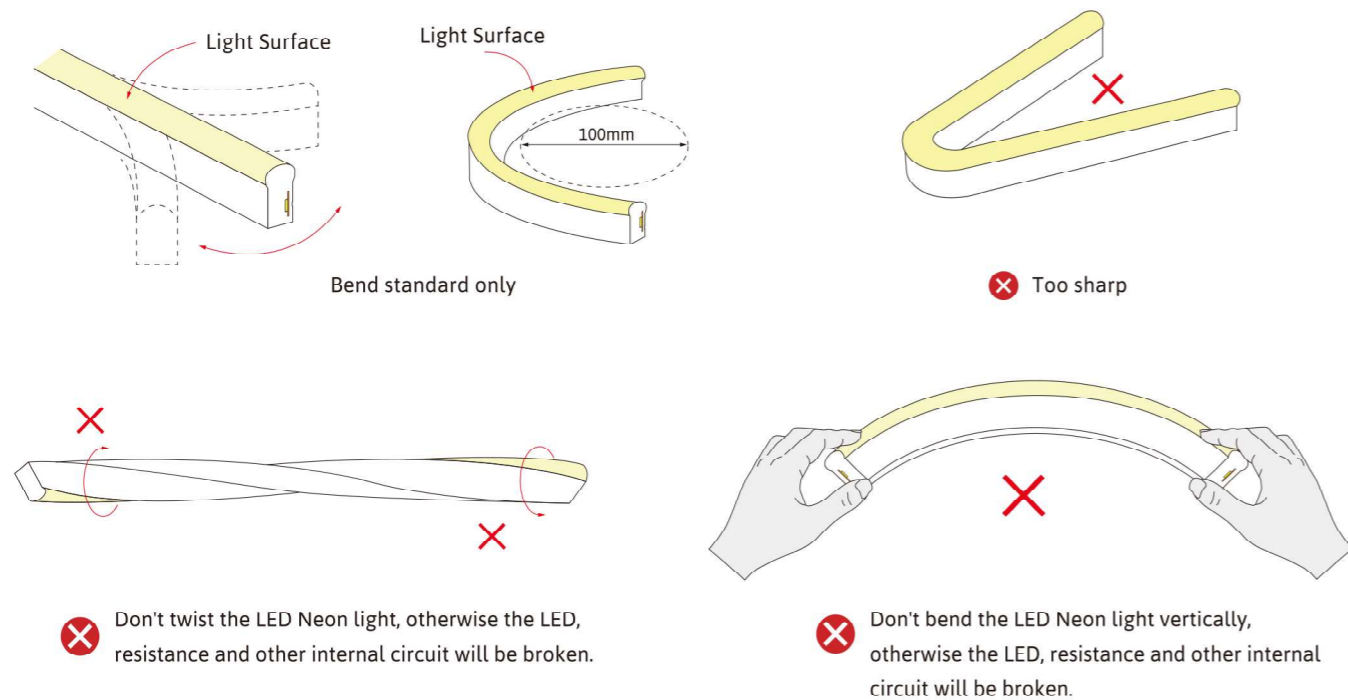


#### Front Cable Entry:

The cable could be hidden in all directions by the flexible design.

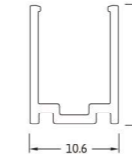
## Operation Guidance

The LED neon Flex can be only bend along the light surface, like the following drawing;  
Don't twist the light, and don't bend smaller than the allowed minimum 100mm bending diameter;



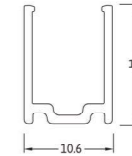
## Accessories

### Aluminium Mounting Clip



Dimension:  
20x10.6x14mm(L x W x H)

### Aluminium Profile



Dimension:  
1000x10.6x14mm(L x W x H)



PVC Cable  
2PIN, 3PIN, 4PIN  
Color: Black



IP67 Connector 2PIN, 3PIN, 4PIN  
Wire Gauge: 0.5mm<sup>2</sup>/22AWG  
Color: Black



Anti-rain connector



Silicone closed end cap  
Dimension:  
12.6x10.5x19.5mm (LxWxH)  
Color: Semi-Transparent



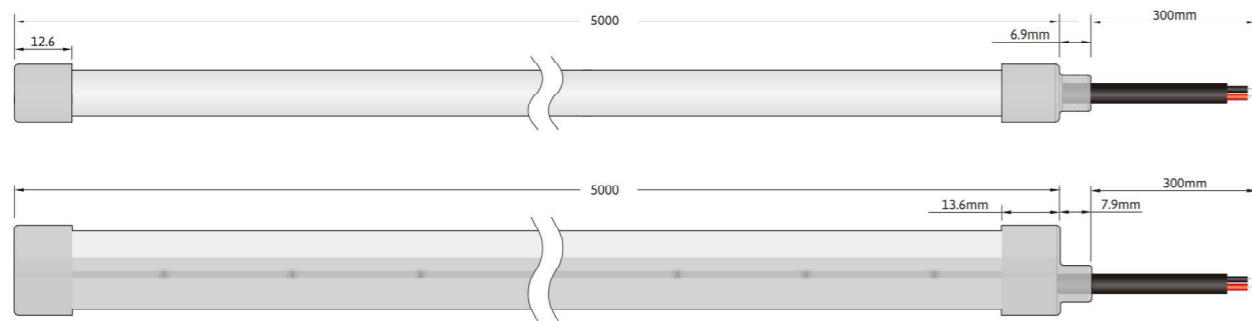
Scissor  
Material: stainless steel

# IP67 FLEX LEDNEON CNE-1023

IP67 FLEX LEDNEON CNE-1023, Side bend, DC24V. Cross section size 10mm x 23mm(W x H), which is horizontal bending with diameter of 150mm. It is IP67 protected, UV resistant, solvents resistant and salt-water resistant. Dot free will bring the most excellent performance for indoor & outdoor applications.



## Dimension

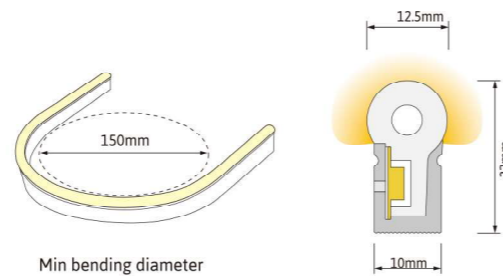


Technical Data	
Working Voltage	DC24V
CRI	>90
Rated Power/m	5w/10w/15w
Storage Temperature	-25 C ~60 C
Ambient Temperature	T <sub>min</sub> = -25 C, T <sub>max</sub> (Table below)

LEDNEON 1023	Low Output	Std Output	High Output
Power(W/m)	5W	10W	15W
Max. Ambient tempt.(T <sub>max</sub> )	55 C	45 C	35 C

### Note:

- When ambient temperature reaches 55°C, the power is suggested to be 5W/M.
- Max. run length refers to single side feed in serial connection.
- The given data are typical values due to the tolerances of the production process and the electrical components, values for light output and electrical power can vary up to 10%.
- The given color temperature is the temperature of finished product.



3 Step MacAdam

UV Protection

Resistant to solvents

**IP67**

Waterproof Grade

**LM80**

LM80 Standard

Resistant Saltwater



## Optical Parameters (Lm/m)

Power	CCT	2700±100	3000±100	3500±200	4000±300	5000±300	Max. Run Length	Unit Cut
5W/M		179	175	194	197	191	25M	50mm
10W/M		349	345	381	387	376	17M	50mm
15W/M		491	478	534	542	531	12M	50mm

Power	CCT	R	G	B	Amber	Pink	Max. Run Length	Unit Cut
5W/M		69	213	40	63	81	25M (R/A: 33M)	50mm
10W/M		148	404	74	125	162	17M (R/A: 18M)	50mm
15W/M		197	513	103	156	218	12M	50mm

Note: -The running length is base on Constant Current 24Vdc LED Strip.

-When use waterproof connector, the max run length of 5W/M,10W/M and 15W/M is respectively 24M,12M and 8M.



## Optical Parameters (Lm/m)

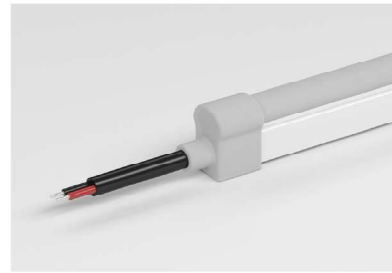
Power	CCT	2700K	6000K	2700K+6000K	Max. Run Length	Unit Cut
5W/M		85	89	175	5M	50mm
10W/M		180	190	362	5M	50mm
15W/M		251	262	509	5M	50mm



## Optical Parameters (Lm/mv)

Power	CCT	R	G	B	RGB	Max. Run Length	Unit Cut
5W/M		19	51	9	78	5M	62.5mm
10W/M		34	98	20	145	5M	62.5mm
15W/M		50	113	24	181	5M	62.5mm

## Cable Entry



Silicone end cap

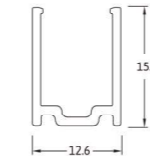
Front Cable Entry:  
The cable could be hidden in all directions by the flexible design.

## Accessories

### Aluminium Mounting clips



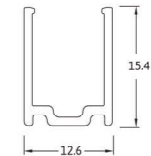
Dimension:  
20x12.6x15.4mm(L x W x H)



### Aluminium Profile



Dimension:  
1000x12.6x15.4mm(L x W x H)



PVC Cable  
2PIN, 3PIN, 4PIN  
Color: Black



IP67 Connector 2PIN, 3PIN, 4PIN  
Wire Gauge: 0.5mm<sup>2</sup>/22AWG  
Color: Black



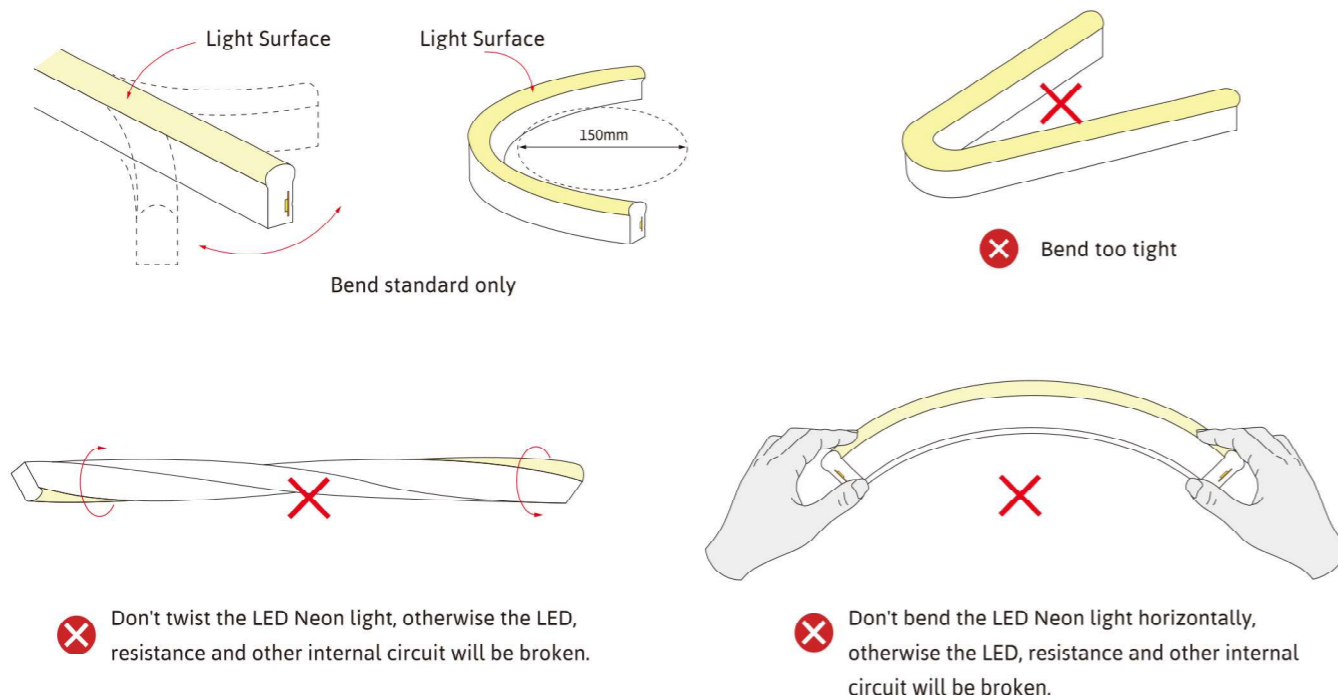
Silicone closed end cap  
Dimension:  
12.6x12.5x25.5mm (LxWxH)  
Color: Semi-Transparent



Scissor  
Material: stainless steel

## Operation Guidance

The LED neon Flex can be only bend along the light surface, like the following drawing;  
Don't twist the light, and don't bend smaller than the allowed minimum 150mm bending diameter;



# IP67 FLEX LEDNEON CNE-1225

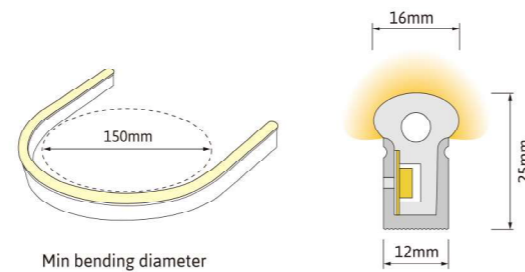
IP67 FLEX LEDNEON CNE-1225, Side bend, DC24V. Cross section size 12mm x 25mm(W x H), which is horizontal bending with diameter of 150mm. It is IP67 protected, UV resistant, solvents resistant and saltwater resistant. Dot free will bring the most excellent performance for indoor & outdoor applications.



## Dimension



Technical Data	
Working Voltage	DC24V
CRI	>90
Rated Power/m	5w/10w/15w
Storage Temperature	-25 C ~60 C
Ambient Temperature	T <sub>min</sub> = -25 C, T <sub>max</sub> (Table below)



LEDNEON 1225	Low Output	Std Output	High Output
Power(W/m)	5W	10W	15W
Max. Ambient tempt.(T <sub>max</sub> )	55 C	45 C	35 C

- Note:**
- When ambient temperature reaches 55 C, the power is suggested to be 5W/M.
  - Max. run length refers to single side feed in serial connection.
  - The given data are typical values due to the tolerances of the production process and the electrical components, values for light output and electrical power can vary up to 10%.
  - The given color temperature is the temperature of finished product.

3 Step MacAdam

UV Protection

Resistant to solvents

**IP67**

Waterproof Grade

**LM80**

LM80 Standard

Resistant Saltwater



## Optical Parameters (Lm/m)

Power	CCT					Max. Run Length	Unit Cut
	2700±100	3000±100	3500±200	4000±300	5000±300		
5W/M	146	144	153	160	153	27M	50mm
10W/M	286	286	304	318	301	17M	50mm
15W/M	400	395	428	441	423	12M	50mm

Power	CCT					Max. Run Length	Unit Cut
	R	G	B	Amber	Pink		
5W/M	56	181	32	50	66	27M (R/A: 35M)	50mm
10W/M	123	341	61	102	132	17M (R/A: 18M)	50mm
15W/M	172	426	86	127	176	12M	50mm

Note: -The running length is base on Constant Current 24Vdc LED Strip.  
 -When use waterproof connector, the max run length of 5W/M,10W/M and 15W/M is respectively 24M,12M and 8M.

## Optical Parameters (Lm/m)

Power	CCT			Max. Run Length	Unit Cut
	2700K	6000K	2700K+6000K		
5W/M	73	75	142	5M	50mm
10W/M	150	156	291	5M	50mm
15W/M	207	216	403	5M	50mm

## RGB (Lm/m)

Power	CCT				Max. Run Length	Unit Cut
	R	G	B	RGB		
5W/M	14	47	10	70	5M	62.5mm
10W/M	29	86	16	131	5M	62.5mm
15W/M	45	102	20	161	5M	62.5mm

## RGBW (Lm/m)

Power	CCT						Max. Run Length	Unit Cut
	R	G	B	W(5000k)	RGBW			
5W/M	9	37	8	38	92	5M	62.5mm	
10W/M	17	66	16.5	84	180	5M	62.5mm	
15W/M	29	82	22	112	255	5M	62.5mm	

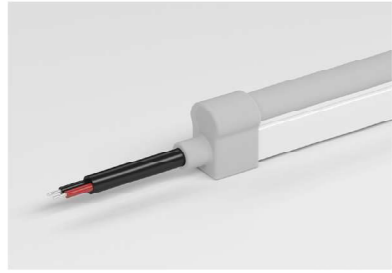
Power	CCT					Max. Run Length	Unit Cut
	R	G	B	W(3500)	RGBW		
5W/M	8	37	9	36	92	5M	62.5mm
10W/M	16	69	17	77	182	5M	62.5mm
15W/M	28	84	24	105	253	5M	62.5mm

Power	CCT					Max. Run Length	Unit Cut
	R	G	B	W(3000k)	RGBW		
5W/M	9	36	9	34	91	5M	62.5mm
10W/M	16	70	17	75	179	5M	62.5mm
15W/M	30	84	23	101	255	5M	62.5mm

Power	CCT					Max. Run Length	Unit Cut
	R	G	B	W(2700k)	RGBW		
5W/M	8	34	8	33	83	5M	62.5mm
10W/M	15	62	16	70	161	5M	62.5mm
15W/M	28	77	21	97	226	5M	62.5mm



## Cable Entry

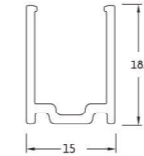
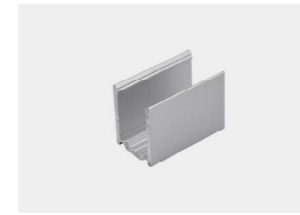


Front Cable Entry:  
The cable could be hidden in all directions by the flexible design.

Silicone end cap

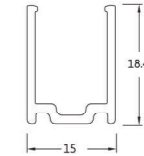
## Accessories

### Aluminium Mounting Clip



Dimension:  
20x15x18.4mm(L x W x H)

### Aluminium Profile



Dimension:  
1000x15x18.4mm(L x W x H)



PVC Cable  
2PIN, 3PIN, 4PIN  
Color: Black



IP67 Connector 2PIN, 3PIN, 4PIN  
Wire Gauge: 0.5mm<sup>2</sup>/22AWG  
Color: Black



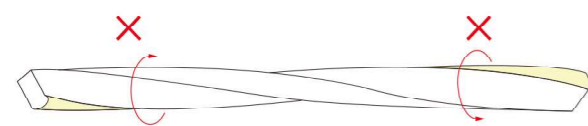
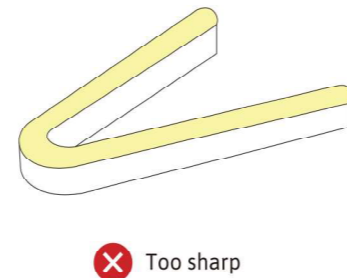
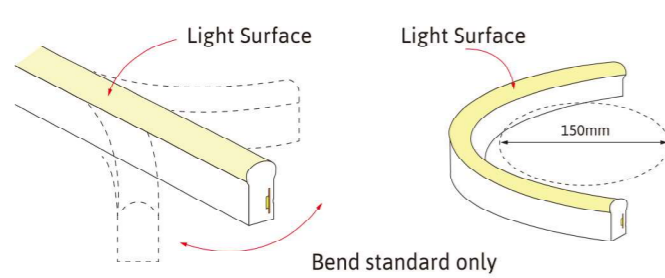
Silicone closed end cap  
Dimension: 14x14.5x27.5mm (LxWxH)  
Color: Semi-Transparent



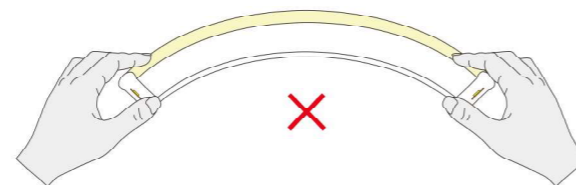
Scissor  
Material: stainless steel

## Operation Guidance

The LED neon Flex can be only bend along the light surface, like the following drawing;  
Don't twist the light, and don't bend smaller than the allowed minimum 150mm bending diameter;



✗ Don't twist the LED Neon light, otherwise the LED, resistance and other internal circuit will be broken.

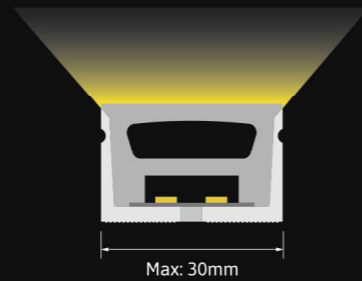


✗ Don't bend the LED Neon light horizontally, otherwise the LED, resistance and other internal circuit will be broken.

# IP67, Large Luminous Surface Light (Top Bend)

CNE-3020 | CNE-2016

- IP67, Large luminous surface
- Unique optical light distribution structure design, uniform lighting surface and no shadow.



# IP67, Mini Luminous Surface Light

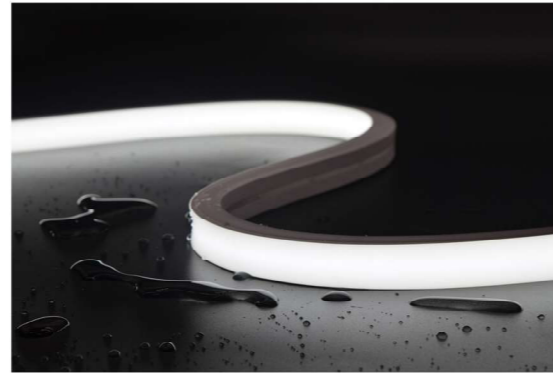
CNE-0606 | CNE-0408

- IP67, Mini luminous surface
- Very easy to bend, complete various shapes
- Unique optical light distribution structure design, uniform lighting surface and no shadow.

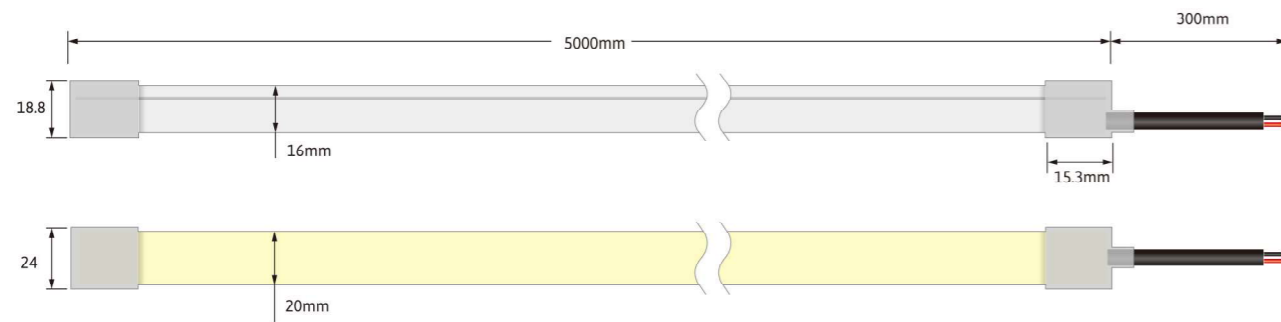


# IP67 FLEX LEDNEON CNE-2016

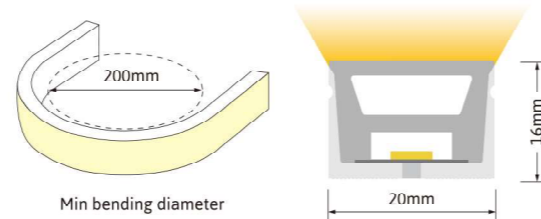
IP67 FLEX LEDNEON CNE-2016, Top bend, DC24V. Cross section size 20mm x 16mm(W x H), which is vertical bending with diameter of 200mm. It is IP67 protected, UV resistant, solvents resistant and saltwater resistant. Dot free will bring the most excellent performance for indoor & outdoor applications.



## Dimension



Technical Data	
Working Voltage	DC24V
CRI	>90
Rated Power/m	12w/16w/20w
Storage Temperature	-25 C ~60 C
Ambient Temperature	T <sub>min</sub> = -25 C, T <sub>max</sub> (Table below)



LEDNEON 2016	Low Output	Std Output	High Output
Power(W/m)	12w	16w	20w
Max. Ambient tempt.(T <sub>max</sub> )	55 C	45 C	35 C

- Note:**
- When ambient temperature reaches 55 C, the power is suggested to be 12W/M.
  - Max. run length refers to single side feed in serial connection.
  - The given data are typical values due to the tolerances of the production process and the electrical components, values for light output and electrical power can vary up to 10%.
  - The given color temperature is the temperature of finished product.



3-Step MacAdam

UV Protection

Resistant to solvents

**IP67**

Waterproof Grade

**LM80**

LM80 Standard

Resistant Saltwater



## Single color (Lm/m)

Power	CCT	2700±100	3000±100	3500±200	4000±300	5000±300	Max. Run Length	Unit Cut
12W/M		733	724	680	783	773	15M	50mm
16W/M		945	937	886	1009	997	11M	50mm
20W/M		1136	1119	1058	1270	1207	9M	50mm

Power	CCT	R	G	B	Amber	Pink	Max. Run Length	Unit Cut
12W/M		335	788	169	270	325	15M	50mm
16W/M		458	973	214	335	412	11M	50mm
20W/M		524	1134	262	344	502	9M	50mm

Note: -The running length is base on Constant Current 24Vdc LED Strip.  
 -When use waterproof connector, the max run length of 12W/M,16W/M and 20W/M is respectively 10M, 7.5M and 6M.



## CCT Tunable (Lm/m)

Power	CCT	2700K	6000K	2700K + 6000K	Max. Run Length	Unit Cut
12W/M		384	395	785	5M	50mm
16W/M		498	524	1013	5M	50mm
20W/M		617	642	1258	5M	50mm



## RGB (Lm/m)

Power	CCT	R	G	B	RGB	Max. Run Length	Unit Cut
12W/M		84	232	44	360	5M	62.5mm
16W/M		111	288	57	449	5M	62.5mm
20W/M		133	326	67	518	5M	62.5mm

## RGBW (Lm/m)

Power	CCT	R	G	B	W(5000k)	RGBW	Max. Run Length	Unit Cut
12W/M		54	176	47	211	480	5M	62.5mm
16W/M		69	245	61	268	635	5M	62.5mm
20W/M		91	252	70	342	740	5M	62.5mm

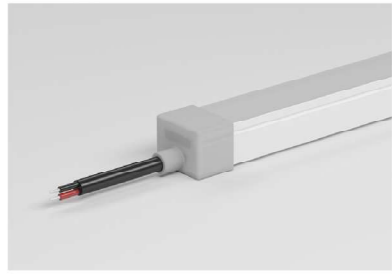
Power	CCT	R	G	B	W(3500)	RGBW	Max. Run Length	Unit Cut
12W/M		56	169	41	213	473	5M	62.5mm
16W/M		71	231	59	281	626	5M	62.5mm
20W/M		93	242	66	352	734	5M	62.5mm

Power	CCT	R	G	B	W(3000k)	RGBW	Max. Run Length	Unit Cut
12W/M		58	186	47	209	492	5M	62.5mm
16W/M		75	256	64	270	654	5M	62.5mm
20W/M		98	260	71	339	760	5M	62.5mm

Power	CCT	R	G	B	W(2700k)	RGBW	Max. Run Length	Unit Cut
12W/M		58	180	46	205	462	5M	62.5mm
16W/M		75	249	60	270	617	5M	62.5mm
20W/M		98	255	68	338	711	5M	62.5mm

## Cable Entry

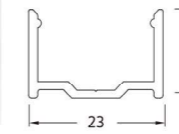
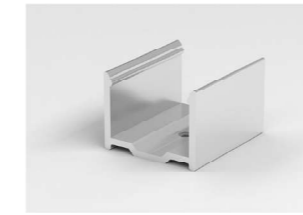
### Silicone end cap



Front Cable Entry:  
The cable could be hidden in all directions by the flexible design.

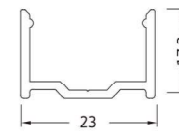
## Accessories

### Aluminium Mounting Clip



Dimension:  
20x23x17.2mm(L x W x H)

### Aluminium Profile



Dimension:  
1000x23x17.2mm(L x W x H)



PVC Cable  
2PIN, 3PIN, 4PIN, 5PIN  
Color: Black



IP67 Connector 2PIN, 3PIN, 4PIN, 5PIN  
Wire Gauge: 0.5mm<sup>2</sup>/22AWG  
Color: Black



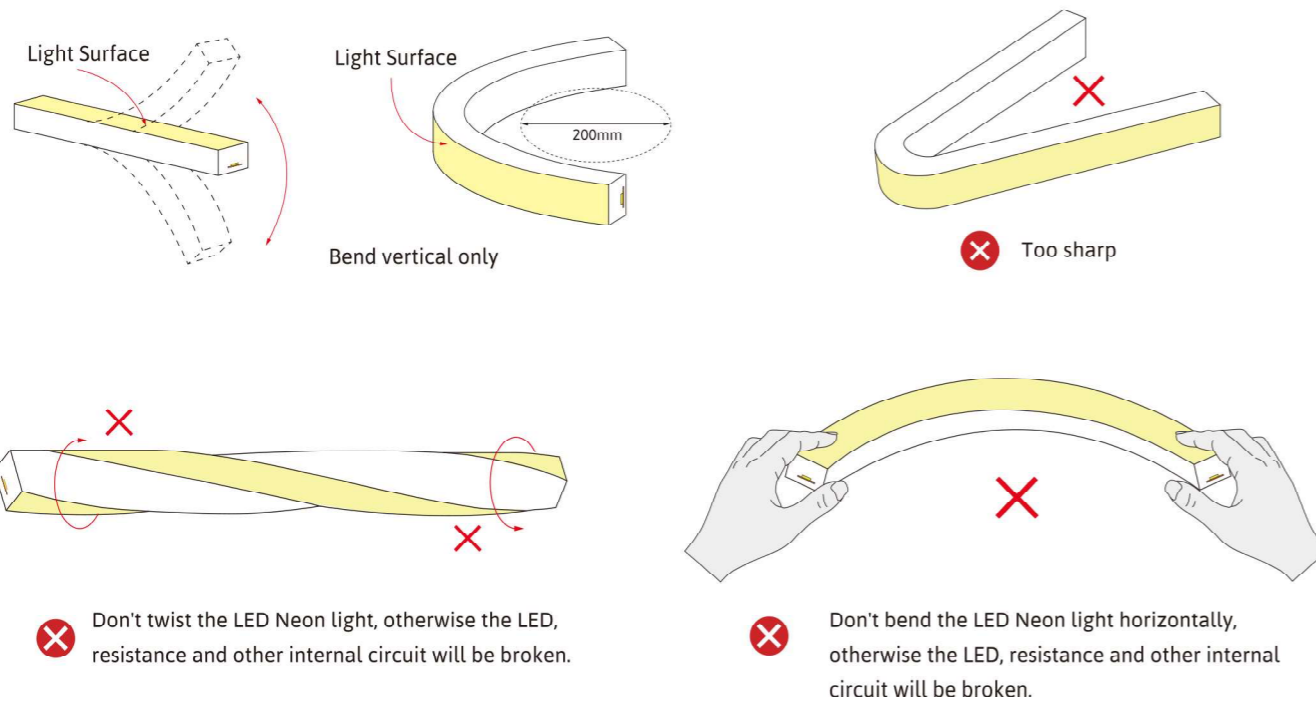
Silicone closed end cap  
Dimension: 15.3x24x18.8mm  
Color: Semi-Transparent



Scissor  
Material: stainless steel

## Operation Guidance

The LED neon Flex can be only bend along the light surface, like the following drawing;  
Don't twist the light, and don't bend smaller than the allowed minimum 200mm bending diameter;

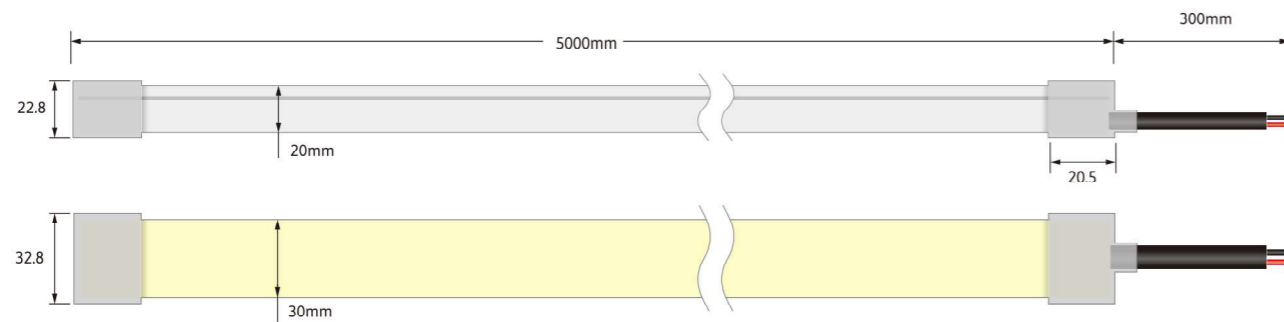


# IP67 FLEX LEDNEON CNE-3020

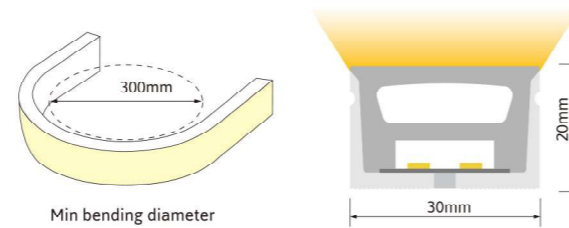
IP67 FLEX LEDNEON CNE-3020, Top bend, DC24V. Cross section size 30mm x 20mm(W x H), which is vertical bending with diameter of 300mm. It is IP67 protected, UV resistant, solvents resistant and saltwater resistant. Dot free will bring the most excellent performance for indoor & outdoor applications.



## Dimension



Technical Data	
Working Voltage	DC24V
CRI	>90
Rated Power/m	16w/20w/24w
Storage Temperature	-25 C ~ 60 C
Ambient Temperature	T <sub>min</sub> = -25 C, T <sub>max</sub> (Table below)



LEDNEON 3020	Low Output	Std Output	High Output
Power(W/m)	16W	20W	24W
Max. Ambient tempt.(T <sub>max</sub> )	55 C	45 C	35 C

### Note:

- When ambient temperature reaches 55 C, the power is suggested to be 16W/M.
- Max. run length refers to single side feed in serial connection.
- The given data are typical values due to the tolerances of the production process and the electrical components, values for light output and electrical power can vary up to 10%.
- The given color temperature is the temperature of finished product.



3-Step MacAdam

UV Protection

Resistant to solvents

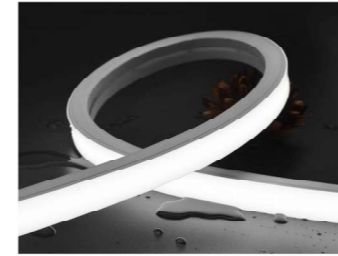
**IP67**

Waterproof Grade

**LM80**

LM80 Standard

Resistant Saltwater



## Single color (Lm/m)

Power	CCT					Max. Run Length	Unit Cut
	2700±100	3000±100	3500±200	4000±300	5000±300		
16W/M	991	1001	926	1050	1067	11M	50mm
20W/M	1209	1222	1129	1280	1298	9M	50mm
24W/M	1426	1439	1333	1511	1534	7.5M	50mm

Power	CCT	R	G	B	Amber	Pink	Max. Run Length	Unit Cut
		16W/M	435	1071	221	352		
20W/M	530	1243	268	338	518	9M	50mm	
24W/M	617	1445	314	367	613	7.5M	50mm	

Note: -The running length is base on Constant Current 24Vdc LED Strip.

-When use waterproof connector, the max run length of 16W/M,20W/M and 24W/M is respectively 7.5M,6M and 5M.

-The above is the longest serial connection length with single end power supply, the longest production length is 5 meters/reel

## CCT Tunable (Lm/m)

Power	CCT	2700K	6000K	2700K + 6000K	Max. Run Length	Unit Cut
		16W/M	500	528		
20W/M	609	651	1232	5M	41.66mm	
24W/M	722	769	1457	5M	41.66mm	

## RGB (Lm/m)

Power	CCT	R	G	B	RGB	Max. Run Length	Unit Cut
		16W/M	108	305	56		
20W/M	133	354	69	536	5M	41.66mm	
24W/M	158	400	78	614	5M	41.66mm	

## RGBW (Lm/m)

Power	CCT	R	G	B	W(5000k)	RGBW	Max. Run Length	Unit Cut
		16W/M	69	218	53	250		
20W/M	88	256	65	313	720	5M	41.66mm	
24W/M	101	291	78	371	840	5M	41.66mm	

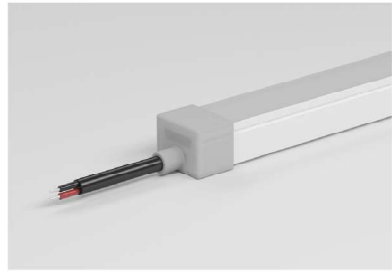
Power	CCT	R	G	B	W(3500)	RGBW	Max. Run Length	Unit Cut
		16W/M	73	216	49	259		
20W/M	92	256	64	321	723	5M	41.66mm	
24W/M	110	285	71	384	840	5M	41.66mm	

Power	CCT	R	G	B	W(3000k)	RGBW	Max. Run Length	Unit Cut
		16W/M	75	224	55	246		
20W/M	91	263	66	365	741	5M	41.66mm	
24W/M	111	300	79	362	863	5M	41.66mm	

Power	CCT	R	G	B	W(2700k)	RGBW	Max. Run Length	Unit Cut
		16W/M	75	219	56	247		
20W/M	93	262	70	305	717	5M	41.66mm	
24W/M	109	291	78	366	836	5M	41.66mm	

## Cable Entry

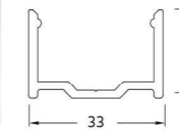
### Silicone end cap



Front Cable Entry:  
The cable could be hidden in all directions by the flexible design.

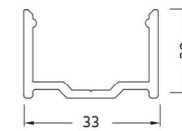
## Accessories

### Aluminium Mounting clips



Dimension:  
20x33x20mm(L x W x H)

### Aluminium Profile



Dimension:  
1000x33x20mm(L x W x H)



PVC Cable  
2PIN, 3PIN, 4PIN, 5PIN  
Color: Black



IP67 Connector 2PIN, 3PIN, 4PIN, 5PIN  
Wire Gauge: 0.5mm<sup>2</sup>/22AWG  
Color: Black



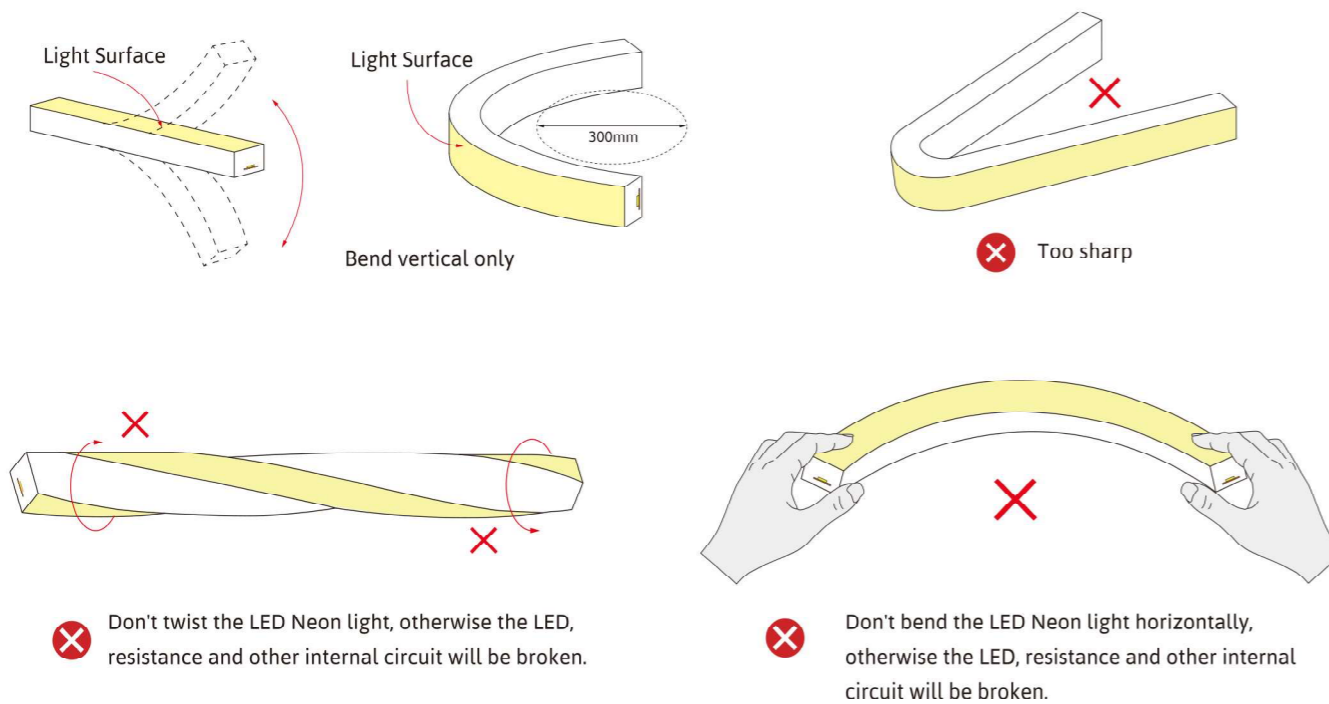
Silicone closed end cap  
Dimension: 20.5x32.8x22.8mm  
Material: silicone  
Color: Semi-Transparent



Scissor  
Material: stainless steel

## Operation Guidance

The LED neon Flex can be only bend along the light surface, like the following drawing;  
Don't twist the light, and don't bend smaller than the allowed minimum 300mm bending diameter;

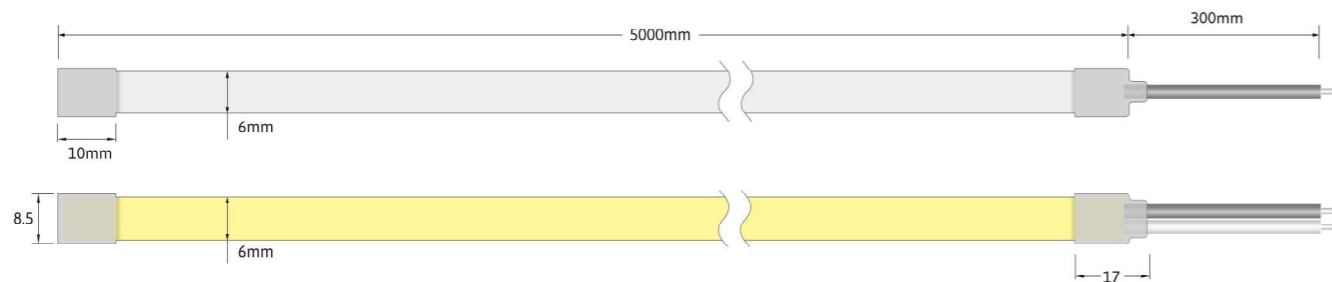


# IP67 FLEX LEDNEON CNE-0606

IP67 FLEX LEDNEON CNE-0606, Top bend, DC24V. Cross section size 6mm x 6mm(W x H), which is vertical bending with diameter of 50mm. It is IP67 protected, UV resistant, solvents resistant and saltwater resistant. Dot free will bring the most excellent performance for indoor & outdoor applications.



## Dimension

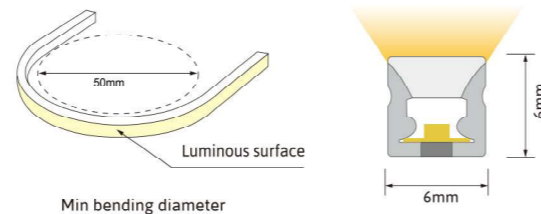


Technical Data	
Working Voltage	DC24V
CRI	>90
Rated Power/m	6W
Storage Temperature	-25 C ~ 60 C
Ambient Temperature	T <sub>min</sub> =-25 C, T <sub>max</sub> (Table below)

LEDNEON 0606	Low Output
Power(W/m)	6W
Max. Ambient tempt.(T <sub>max</sub> )	55 C

### Note:

- Max. run length refers to single side feed in serial connection.
- The given data are typical values due to the tolerances of the production process and the electrical components, values for light output and electrical power can vary up to 10%.
- The given color temperature is the temperature of finished product.



3 Step MacAdam	UV Protection	Resistant to solvents
IP67 Waterproof Grade	LM80 LM80 Standard	Resistant Saltwater



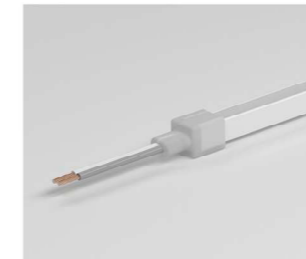
## Single color (Lm/m)

CCT	2400±100	2800±100	3200±200	3800±300	4400±300	Max. Run Length	Unit Cut
Power 5W/M	330	345	348	358	353	5M	25mm

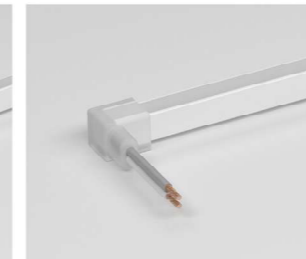
The above color temperature is the finished-product color temperature.

## Cable Entry

### Silicone end cap



**Front Cable Entry**  
The cable could be hidden in all directions by the flexible design.

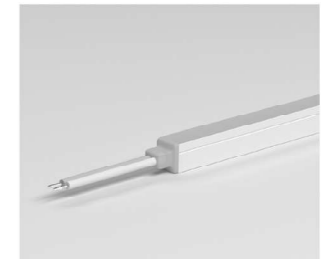


**Side Cable Entry**  
The cable could be perfectly hidden to achieve seamless



**Bottom Cable Entry**  
The cable could be perfectly hidden to achieve seamless

### Integral End Cap



**Front Cable Entry**  
The cable could be hidden in all directions by the flexible design.

## Operation Guidance

The LED neon Flex can be only bend along the light surface, like the following drawing:  
Don't twist the light, and don't bend smaller than the allowed minimum 50mm bending diameter;

**Light Surface**  
Bend vertical only

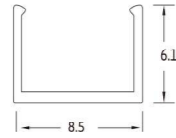
**Too sharp**

**Don't twist the LED Neon light, otherwise the LED, resistance and other internal circuit will be broken.**

**Don't bend the LED Neon light horizontally, otherwise the LED, resistance and other internal circuit will be broken.**

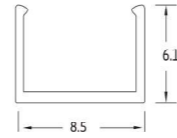
## Accessories

### Aluminium Mounting clips



Dimension:  
15x8.5x6.1mm (L x W x H)

### Aluminium Profile



Dimension:  
1000x8.5x7.2mm (L x W x H)



2 PIN grey/white wire



Silicone closed end cap  
Dimension: 10x8.5x8.5mm (LxWxH)  
Color: Semi-Transparent



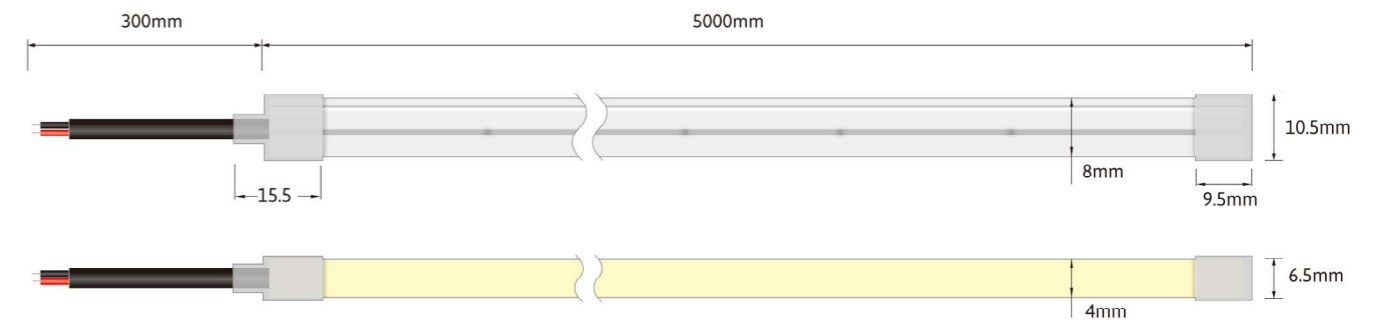
Scissor  
Material: stainless steel

## IP67 FLEX LEDNEON CNE-0408

IP67 FLEX LEDNEON CNE-0408, Side bend, DC24V. Cross section size 4mm x 8mm(W x H), which is horizontal bending with diameter of 30mm. It is IP67 protected, UV resistant, solvents resistant and saltwater resistant. Dot free will bring the most excellent performance for indoor & outdoor applications.



### Dimension

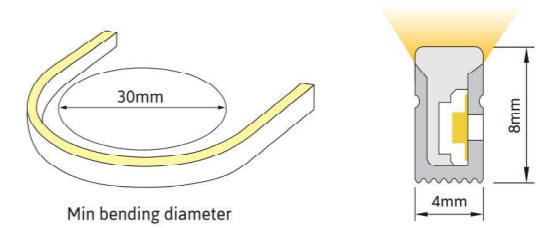


Technical Data	
Working Voltage	DC24V
CRI	>90
Rated Power/m	6W
Storage Temperature	-25 C ~60 C
Ambient Temperature	T <sub>min</sub> =-25 C, T <sub>max</sub> (Table below)

LEDNEON 0408	Low Output
Power(W/m)	6W
Max. Ambient tempt.(T <sub>max</sub> )	55 C

### Note:

- Max. run length refers to single side feed in serial connection.
- The given data are typical values due to the tolerances of the production process and the electrical components, values for light output and electrical power can vary up to 10%.
- The given color temperature is the temperature of finished product.



Min bending diameter







### Single color (Lm/m)

CCT	2400±100	3000±100	3500±200	4200±300	5300±300	Max. Run Length	Unit Cut
Power	212	253	223	214	221	5M	25mm
5W/M							

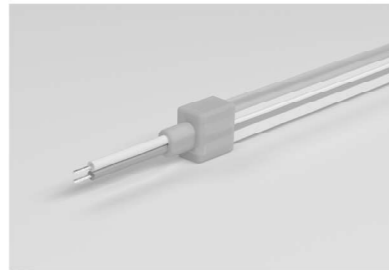
The above color temperature is the finished-product color temperature.

### Cable Entry

#### Integral End Cap



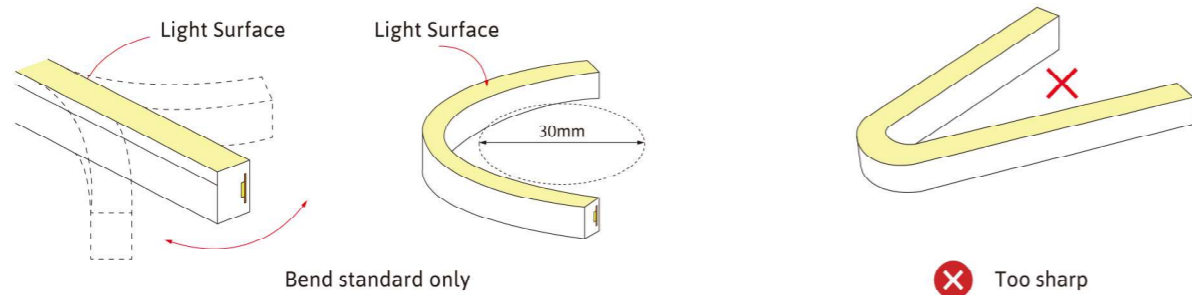
#### Silicone end cap



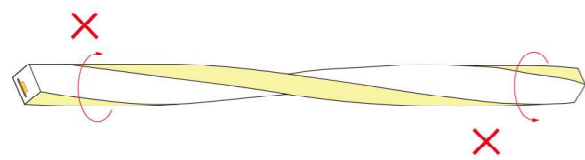
Front Cable Entry:  
The cable could be hidden in all directions by the flexible design.

### Operation Guidance

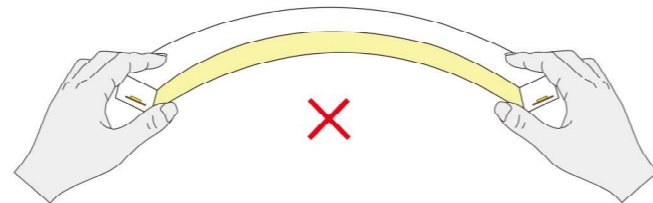
The LED neon Flex can be only bend along the light surface, like the following drawing;  
Don't twist the light, and don't bend smaller than the allowed minimum 50mm bending diameter;



✗ Too sharp



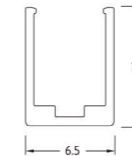
✗ Don't twist the LED Neon light, otherwise the LED, resistance and other internal circuit will be broken.



✗ Don't bend the LED Neon light horizontally, otherwise the LED, resistance and other internal circuit will be broken.

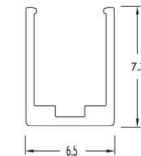
### Accessories

#### Aluminium Mounting Clip



Dimension:  
15x6.5x7.2mm(L x W x H)

#### Aluminium Profile



Dimension:  
1000x6.5x7.2mm(L x W x H)



2 PIN grey/white wire




Silicone closed end cap  
Dimension: 9.5x6.5x10.5mm (LxWxH)  
Color: Semi-Transparent

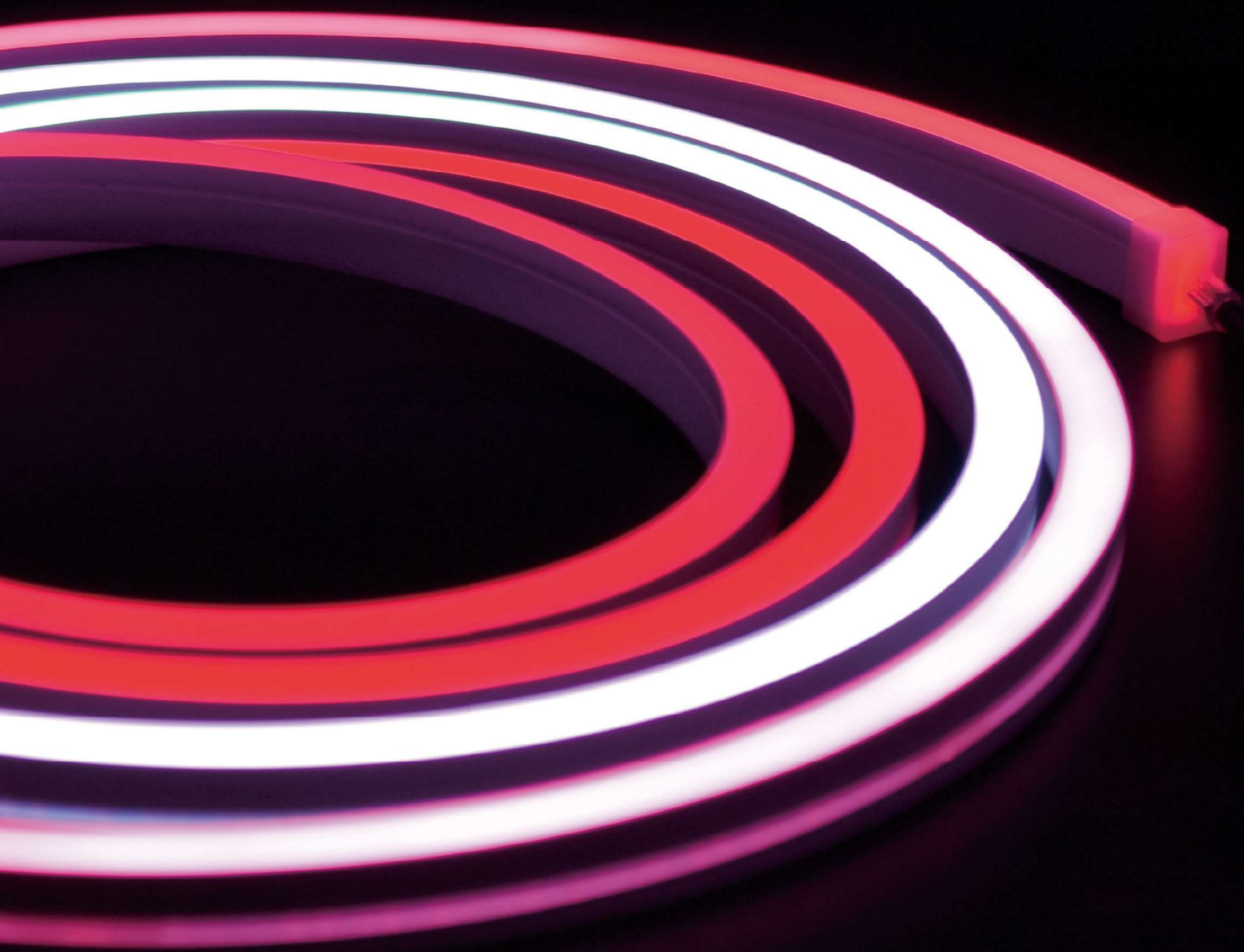


Scissor  
Material: stainless steel

## IP67 DMX512 Pixel RGB / RGBW (Side Bend)

CNE-1220   
DMX512

- Compatible with DMX512(1990) protocol.
- Adopting RS485 signal trunk and signal differential transmission mode to ensure stronger ability of anti-interference and longer transmission distance
- Automatically addressing with editor



## IP67 DMX512 Pixel RGB / RGBW (Top Bend)

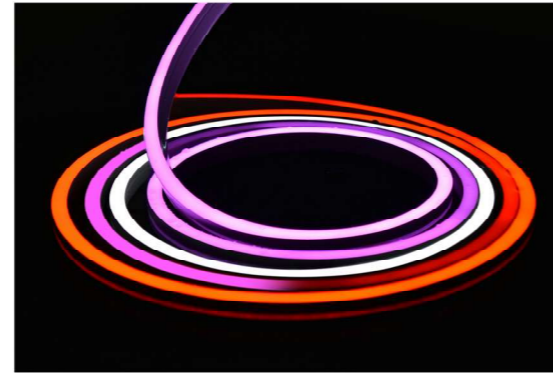
CNE-1615   
DMX512

- Compatible with DMX512(1990) protocol.
- Adopting RS485 signal trunk and signal differential transmission mode to ensure stronger ability of anti-interference and longer transmission distance
- Automatically addressing with editor



# IP67 FLEX LEDNEON CNE-1220

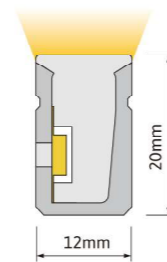
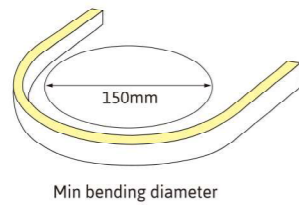
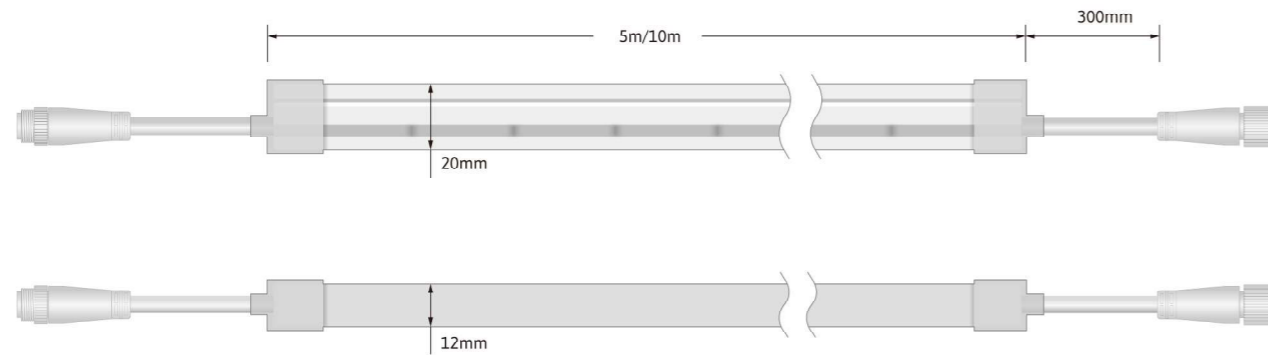
IP67 FLEX LEDNEON CNE-1220, Side bend, DC24V. Cross section size 12mm x 20mm(W x H), which is horizontal bending with radius of 150mm. It is IP67 protected, UV resistant, solvents resistant and saltwater resistant. Dot free will bring the most excellent performance for indoor & outdoor applications.



## Optical Parameters

	RGB	RGBW
Voltage(V)	DC24	DC24
power(W/M)	Max.12	Max.16
Minim cuttable length	125	125
Gray Scale	256	256
Working Temperature	-25 C -- 45 C	-25 C -- 45 C
Pixel(pixel/M)	8	8
Control Mode	DMX512	DMX512
Lumen / m	R: 31 G: 92 B: 18 RGB:138	R: 23 G: 70 B: 19 W: 83 RGBW: 186

## Dimension



Compatible with DMX512(1990) protocol.

Adopting RS485 signal trunk and signal differential transmission mode to ensure stronger ability of anti-interference and longer transmission distance

Automatically addressing with editor



## Cable Entry

Silicone end cap



**Front Cable Entry:**  
The cable could be hidden in all directions by the flexible design.



**Side Cable Entry:**  
The cable could be perfectly hidden to achieve seamless

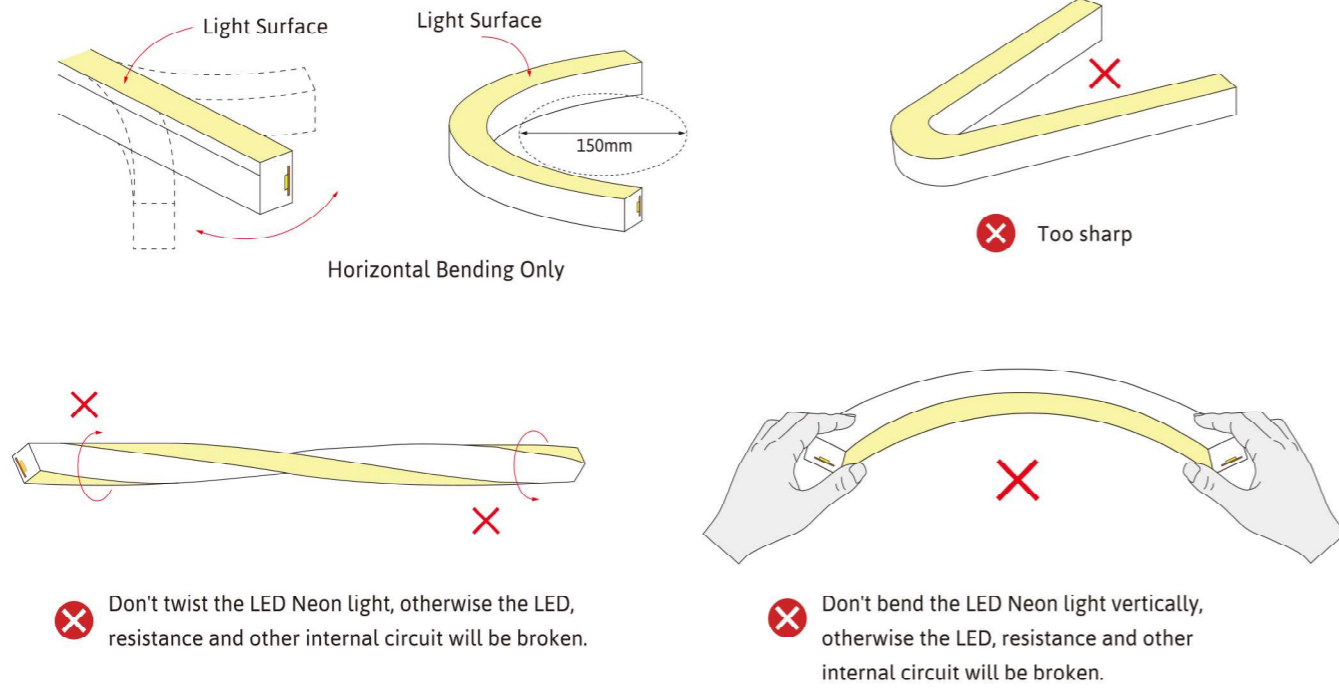


**Bottom Cable Entry:**  
The cable could be perfectly hidden to achieve seamless



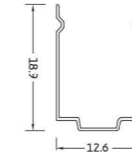
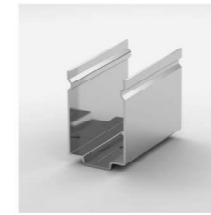
## Operation Guidance

The LED neon Flex can be only bend along the light surface, like the following drawing:  
Don't twist the light, and don't bend smaller than the allowed minimum 150mm bending diameter;



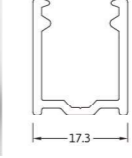
## Accessories

### Mounting Clip



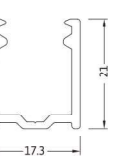
Dimension:  
20x12.6x18.9mm(L x W x H)

### Aluminium Mounting Clip



Dimension:  
20x17.3x21.1mm(L x W x H)

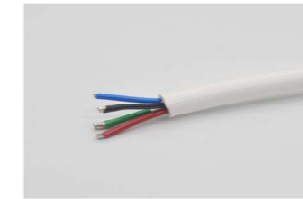
### Aluminium Profile



Dimension:  
1000x17.3x21.1mm(L x W x H)



IP67 Connector 4PIN, 5PIN  
Wire Gauge: 0.5mm<sup>2</sup>/22AWG  
Color: Black



Silicone Cable  
4PIN, 5PIN  
Color: White



T-type 3 channel connector



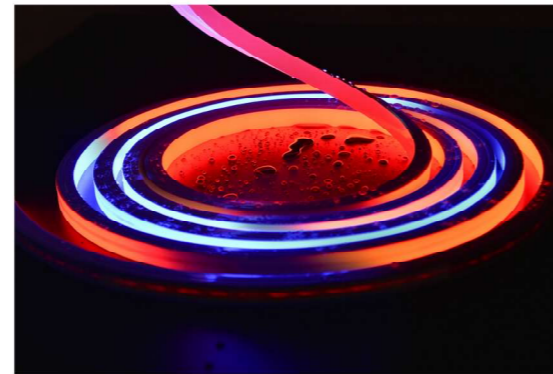
Silicone closed end cap  
Dimension: 13x15x22.5mm  
Color: Semi-Transparent



Scissor  
Material: stainless steel

# IP67 FLEX LEDNEON CNE-1615

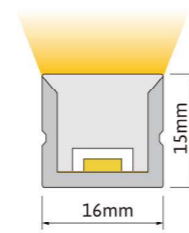
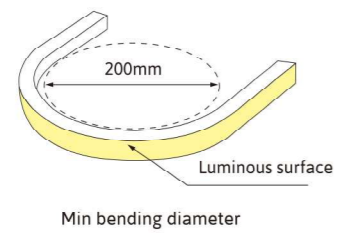
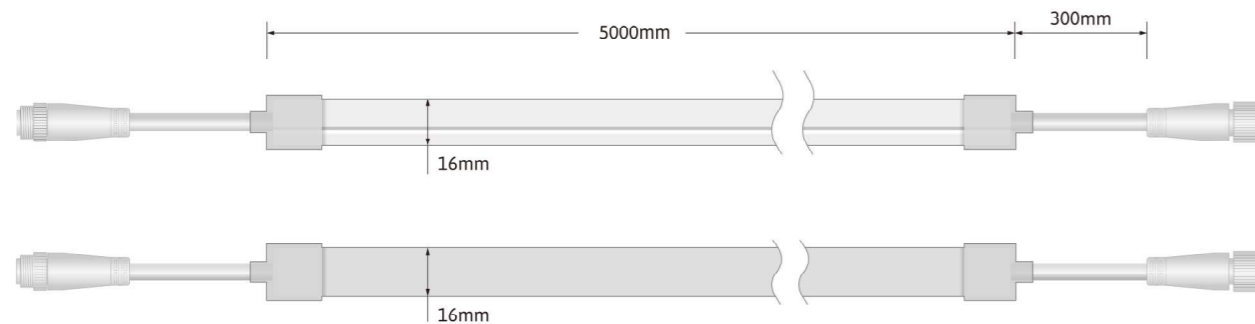
IP67 FLEX LEDNEON CNE-1615, Top bend, DC24V. Cross section size 16mm x 15mm(W x H), which is vertical bending with diameter of 150mm. It is IP67 protected, UV resistant, solvents resistant and salt-water resistant. Dot free will bring the most excellent performance for indoor & outdoor applications.



## Optical Parameters

	RGB	RGBW
Voltage(V)	DC24	DC24
power(W/M)	Max.12	Max.16
Minim cuttable length	125	125
Gray Scale	256	256
Working Temperature	-25 C -- 45 C	-25 C -- 45 C
Pixel(pixel/M)	8	8
Control Mode	DMX512	DMX512
Lumen / m	R:53 G:146 B:28 RGB:218	R:39 G:119 B:28 W:149 RGBW:315

## Dimension



Compatible with DMX512(1990) protocol.

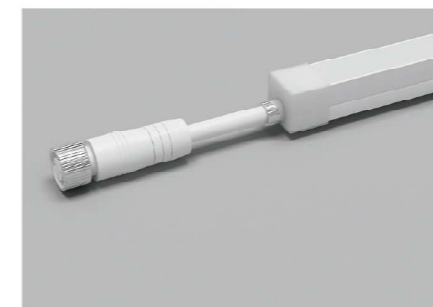
Adopting RS485 signal trunk and signal differential transmission mode to ensure stronger ability of anti-interference and longer transmission distance

Automatically addressing with editor



## Cable Entry

Silicone end cap



Front Cable Entry:  
The cable could be hidden in all directions by the flexible design.



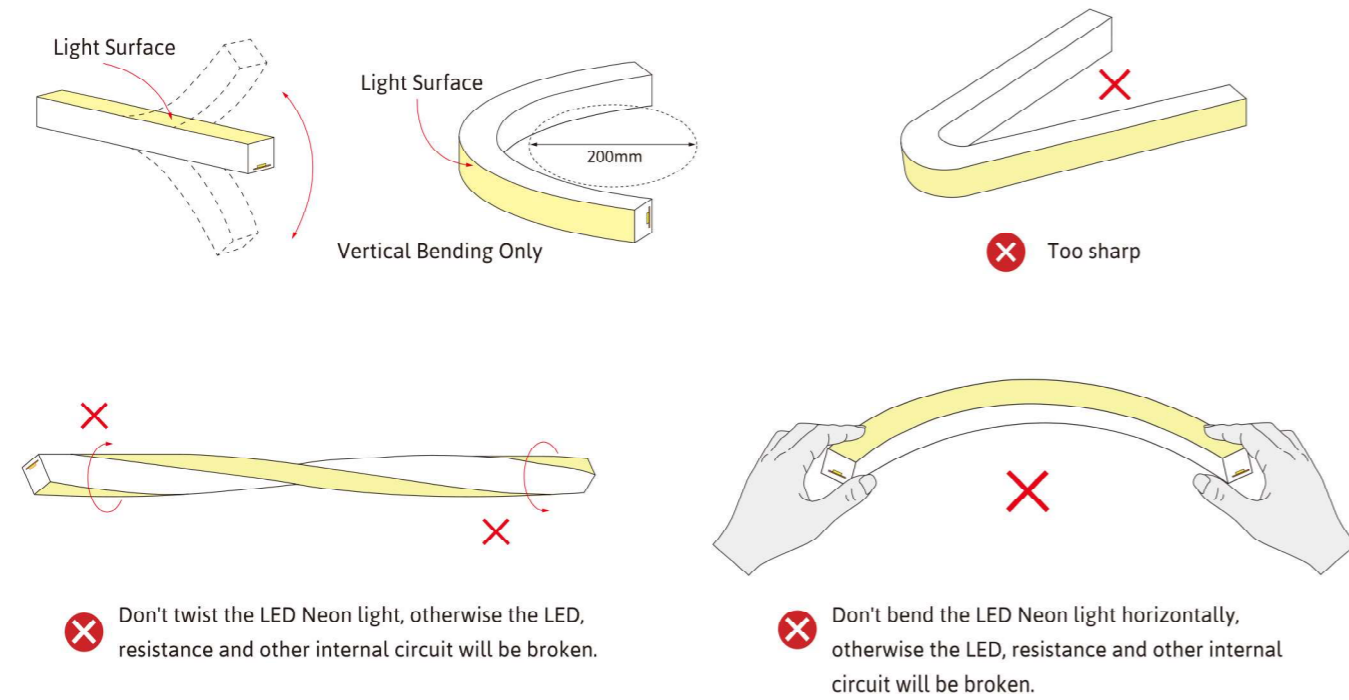
Side Cable Entry:  
The cable could be perfectly hidden to achieve seamless



Bottom Cable Entry:  
The cable could be perfectly hidden to achieve seamless

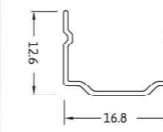
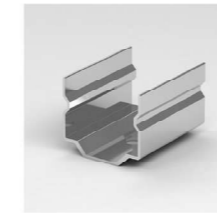
## Operation Guidance

The LED neon Flex can be only bend along the light surface, like the following drawing;  
Don't twist the light, and don't bend smaller than the allowed minimum 150mm bending diameter;



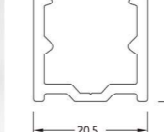
## Accessories

### Mounting Clip



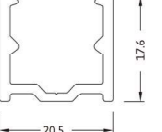
Dimension:  
20x12.6x16.8mm(L x W x H)

### Aluminium Mounting Clip



Dimension:  
20x20.5x17.6mm(L x W x H)

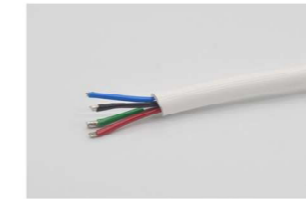
### Aluminium Profile



Dimension:  
1000x20.5x17.6mm(L x W x H)



IP67 Connector 4PIN, 5PIN  
Wire Gauge: 0.5mm<sup>2</sup>/22AWG  
Color: Black



Silicone Cable  
4PIN, 5PIN  
Color: White



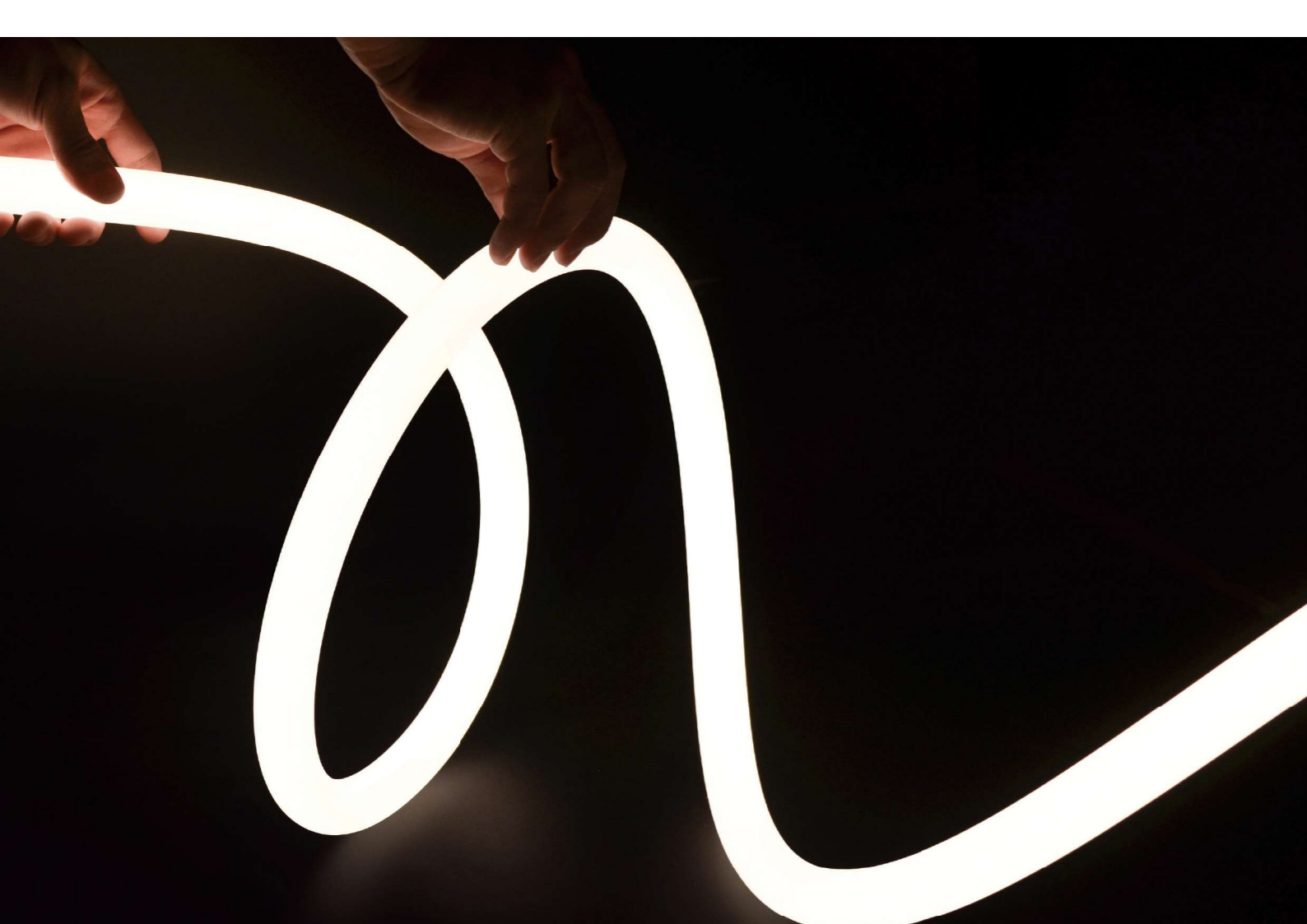
T-type 3 channel connector



Silicone closed end cap  
Dimension: 13x18.4x17.5mm  
Color: Semi-Transparent



Scissor  
Material: stainless steel



## 360° EMITTING SILICONE NEON STRIP

CNE-2525

- Unique optical light distribution structure design, 360° emitting uniform without shadow.
- IP65 protection level with integrated extrusion molding process, high light transmittance, environment-friendly silicone material.
- Excellent toughness, stylish appearance, elegant design



## 3D Top bend & side bend

CNE-3D1615

- High light transmittance, environmental protection grade silicone material, integrated extrusion molding process.
- Unique optical light distribution structure design, uniform lighting surface and no shadow.



# 360° EMITTING SILICONE NEON STRIP CNE-2525

360 ° EMITTING SILICONE NEON STRIP  $\Phi$  25 MM, DC24V. Cross section size diameter 25mm, which is vertical bending with diameter of 200mm. It is IP65 protected, UV resistant, solvents resistant and saltwater resistant. Dot free will bring the most excellent performance for indoor & outdoor applications.



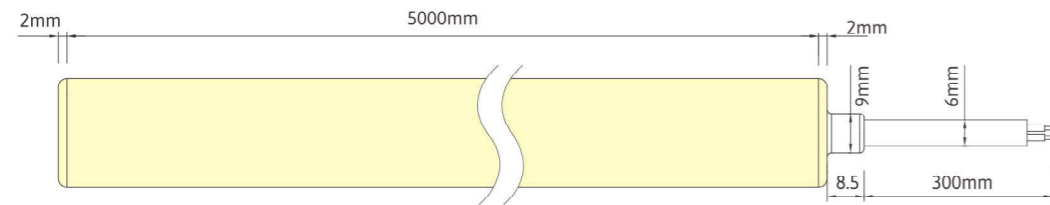
## Single color (Lm/m)

Power	CCT	2700±100	3000±100	3500±200	4000±300	5000±300	Max. Run Length	Unit Cut
5W/M		276	284	306	298	309	5M	/
10W/M		517	529	600	556	604	5M	/

Power	CCT	R	G	B	Amber	Pink	Max. Run Length	Unit Cut
5W/M		114	289	61	97	210	5M	/
10W/M		246	502	114	209	409	5M	/

Note: The running length is base on Constant Current 24Vdc LED Strip.

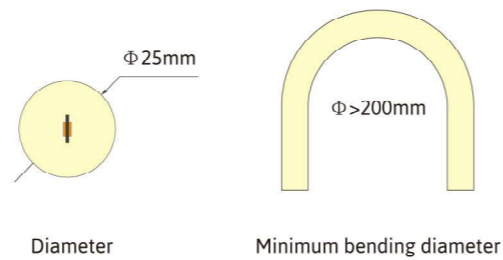
## Dimension



## CCT Tunable (Lm/m)

Power	CCT	2700K	6000K	2700K + 6000K	Max. Run Length	Unit Cut
5W/M		124	124	250	5M	/
10W/M		258	262	517	5M	/

Technical Data	
Working Voltage	DC24V
CRI	>90
Rated Power/m	5w/10w/16w
Storage Temperature	-25 C ~60 C
Ambient Temperature	T <sub>min</sub> = -25 C, T <sub>max</sub> (Table below)



## RGB (Lm/m)

Power	CCT	R	G	B	RGB	Max. Run Length	Unit Cut
5W/M		27	98	16	144	5M	/
10W/M		56	162	26	248	5M	/

LEDNEON R25	Low Output	Std Output	High Output
Power(W/m)	5W	10W	16W
Max. Ambient tempt.(T <sub>max</sub> )	55 C	45 C	35 C

### Note:

- When ambient temperature reaches 55 C, the power is suggested to be 12W/M.
- Max. run length refers to single side feed in serial connection.
- The given data are typical values due to the tolerances of the production process and the electrical components, values for light output and electrical power can vary up to 10%.
- The given color temperature is the temperature of finished product.

3-Step MacAdam

UV Protection

Resistant to solvents

**IP65**

Waterproof Grade

**LM80**

LM80 Standard

Resistant Saltwater



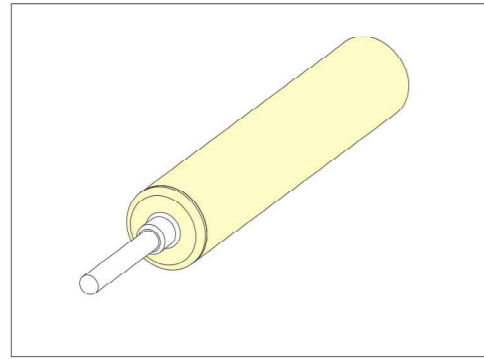
## RGBW (Lm/m)

Power	CCT	R	G	B	W(5500K)	RGBW	Max. Run Length	Unit Cut
16W/M		58	194	32	237	281	5M	/

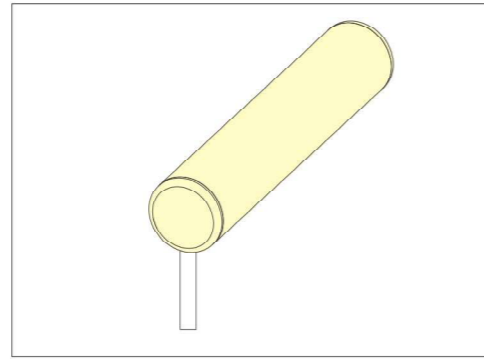




## Cable Entry

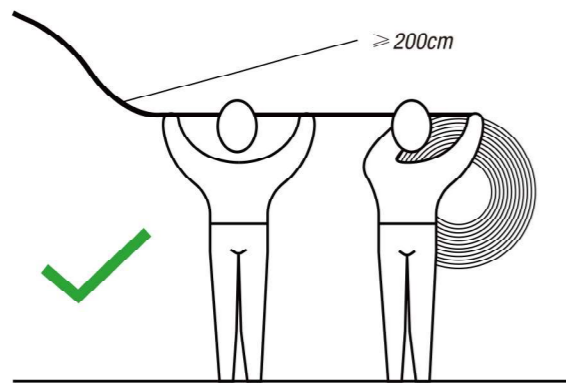


Cable entry: Front

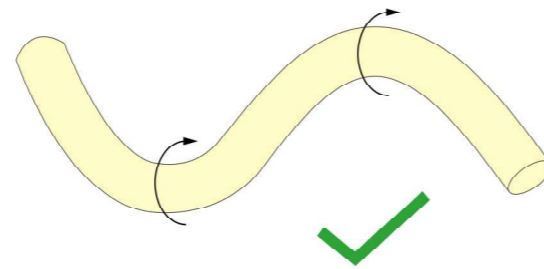


Side Cable Entry

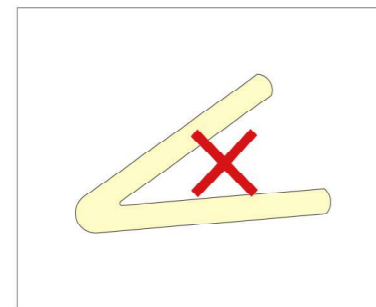
## Installation/Use Precautions



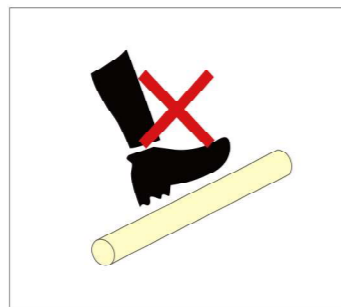
When the length of the strip is longer than 2 meters, have two people work together to install it.



Bending diameter must be greater than 200mm



Small Angle bending is prohibited



Prohibit trample

Tests show that formaldehyde and benzene substances will make silicone products yellowing. If the silicone products are used in the indoor environment of new decoration, epoxy floor paint, wall paint, wallpaper adhesive, all kinds of decoration materials, or new furniture, are likely to release formaldehyde and benzene substances. In order to avoid silicone material affected, it is suggested that the use of the environment after the completion of the new decoration, formaldehyde and benzene should be removed first, or it should be ventilated for a period of time before installing the strip.

## Accessories



PC Profile  
Material: PC  
Color: Transparent  
Size: 25x30x1000mm  
Noted: With screws, plastic plugs, hanging rope



PC Profile  
Material: PC  
Color: Transparent  
Size: 25x30x1000mm  
Noted: With screws, plastic plugs, hanging rope



Lift Fixtures A  
Material: Aluminum Alloy  
Color: Black  
Size:  $\Phi$ 38x41mm  
Noted: With screws, plastic plugs



Lift Fixtures B  
(For single color product use ONLY)  
Material: Aluminum Alloy  
Color: Black  
Size:  $\Phi$ 5x92mm  
Noted: With screws, plastic plugs



Connector for Side outlet  
Material: Aluminum Alloy  
Color: Black  
Size:  $\Phi$ 27.6x37mm  
Noted: With screws



Connector  
Material: Aluminum Alloy  
Color: Black  
Size:  $\Phi$ 27.6x37mm  
Noted: With screws



U-shaped Lift Fixtures  
Material: Aluminum Alloy  
Color: Black  
Size:  $\Phi$ 38x41mm  
Noted: With screws, plastic plugs



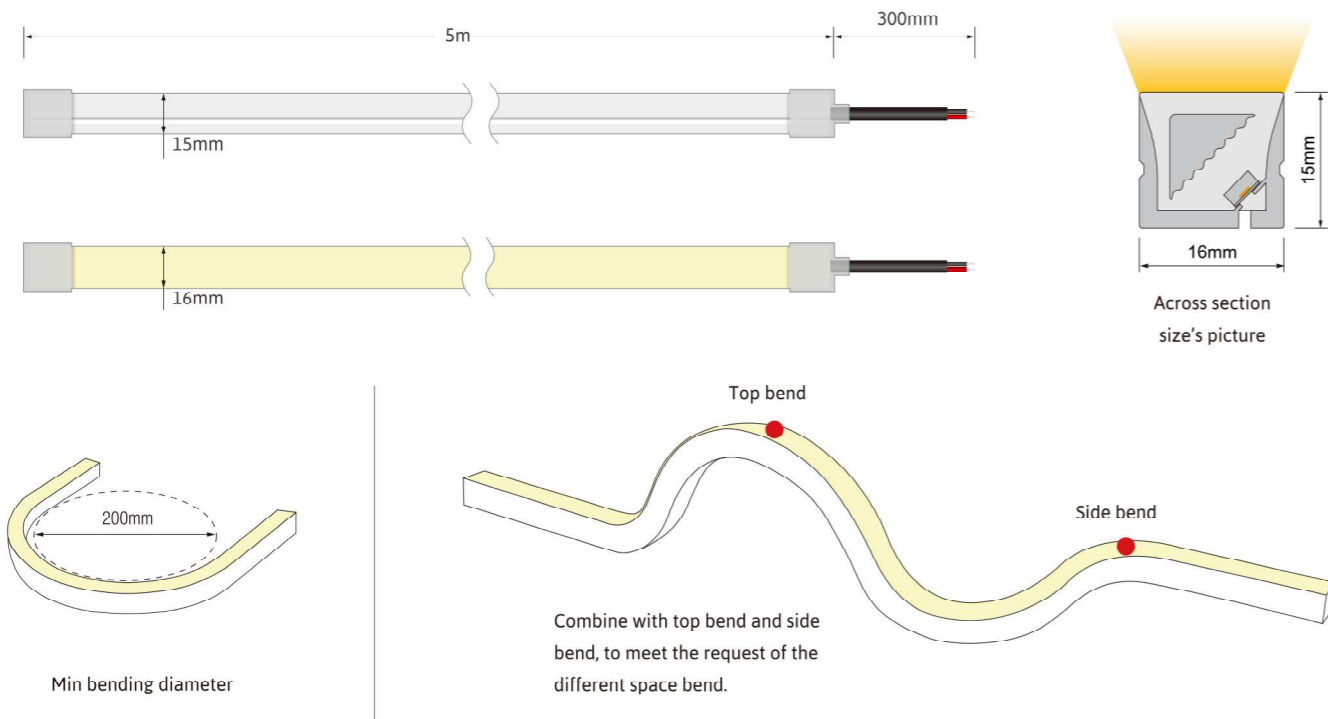
Hanging Rope  
Material: Stainless Steel  
Color: Stainless steel natural color  
Size:  $\Phi$ 1.5x1000mm  
Noted: With screws, plastic plugs

# IP67 TOP BEND & SIDE BEND CNE-3D1615

High light transmittance, environmental protection grade silicone material, integrated extrusion molding process. Unique optical light distribution structure design, uniform lighting surface and no shadow. IP67 protection level, salt solution resistance, acids & alkalis, corrosive gases, fire and UV. Excellent toughness, simple and stylish appearance, delicate and unique



## Dimension



Note:  
 -Max. run length refers to single side feed in serial connection.  
 -The given data are typical values due to the tolerances of the production process and the electrical components, values for light output and electrical power can vary up to 10%.  
 -The given color temperature is the temperature of finished product.



 3-Step MacAdam	 UV Protection	 Resistant to solvents
<b>IP67</b> Waterproof Grade	<b>LM80</b> LM80 Standard	 Resistant Saltwater



## Optical Parameters (Lm/m)

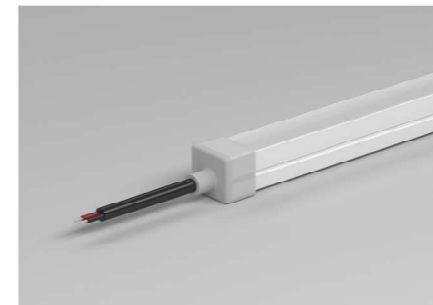
Power	CCT	2700±100	3000±100	3500±200	4000±300	5000±300	Max. Run Length	Unit Cut
5W/M		357	372	384	385	391	5M	50mm
10W/M		675	701	726	728	745	5M	50mm

Power	CCT	R	G	B	Amber	Pink	Max. Run Length	Unit Cut
5W/M		151	320	77	128	255	5M	50mm
10W/M		307	533	144	260	481	5M	50mm

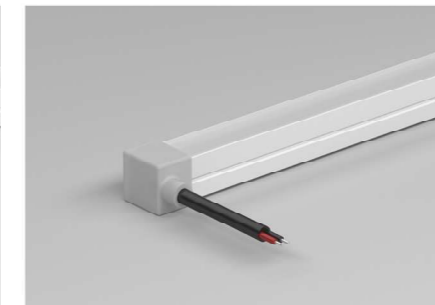
Note: The running length is based on Constant Current 24Vdc LED Strip.

## Cable Entry

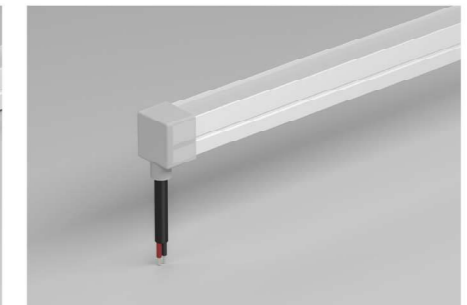
### Silicone end cap



Front Cable Entry:  
The cable could be hidden in all directions by the flexible design.

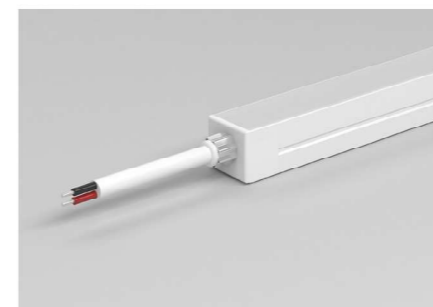


Side Cable Entry:  
The cable could be perfectly hidden to achieve seamless.



Bottom Cable Entry:  
The cable could be perfectly hidden to achieve seamless.

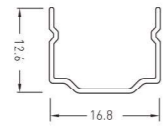
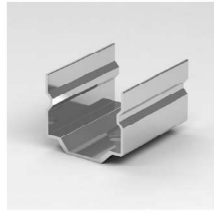
### Integral end cap



Front Cable Entry:  
The cable could be hidden in all directions by the flexible design.

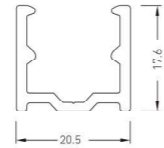
## Accessories

### Mounting Clips



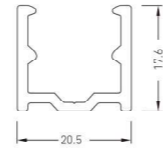
Dimension:  
20x12.6x16.8mm

### Aluminium Mounting clips



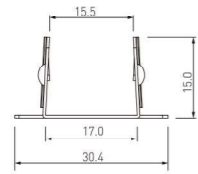
Dimension:  
20x20.5x17.6

### Aluminium Profile



Dimension:  
1000x20.5x17.6

### Curved aluminum profile



Dimension: 51.4x30.4x15mm

### Suspension Installation



PVC Cable  
2PIN, 3PIN, 4PIN  
Color: Black



IP67 Connector 2PIN, 3PIN, 4PIN  
Wire Gauge: 0.5mm<sup>2</sup>/22AWG  
Color: Black



Silicone Cable  
2PIN, 3PIN, 4PIN  
Color: White



Scissor  
Material: stainless steel